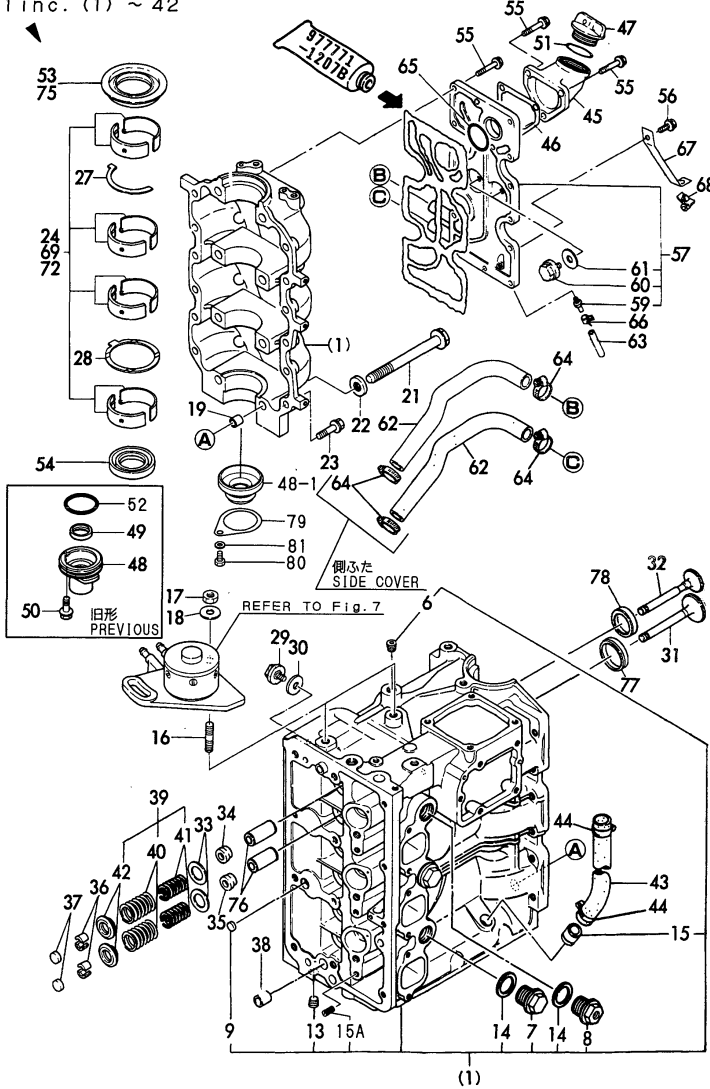


Fig.1. CYLINDER BLOCK

Fig. 1 シリンダブロック
CYLINDER BLOCK

見出しNo. 1は、見出しNo. (1) から42を含みます。
1 inc. (1) ~ 42



Remarks
(1) UNDER SIZED PART (0.25)
(2) UNDER SIZED PART (0.5)
(3) REPAIR PART, THIS PART IS USED BY
SPECIAL TOOL.

OCR10-G42501 1. CYLINDER BLOCK

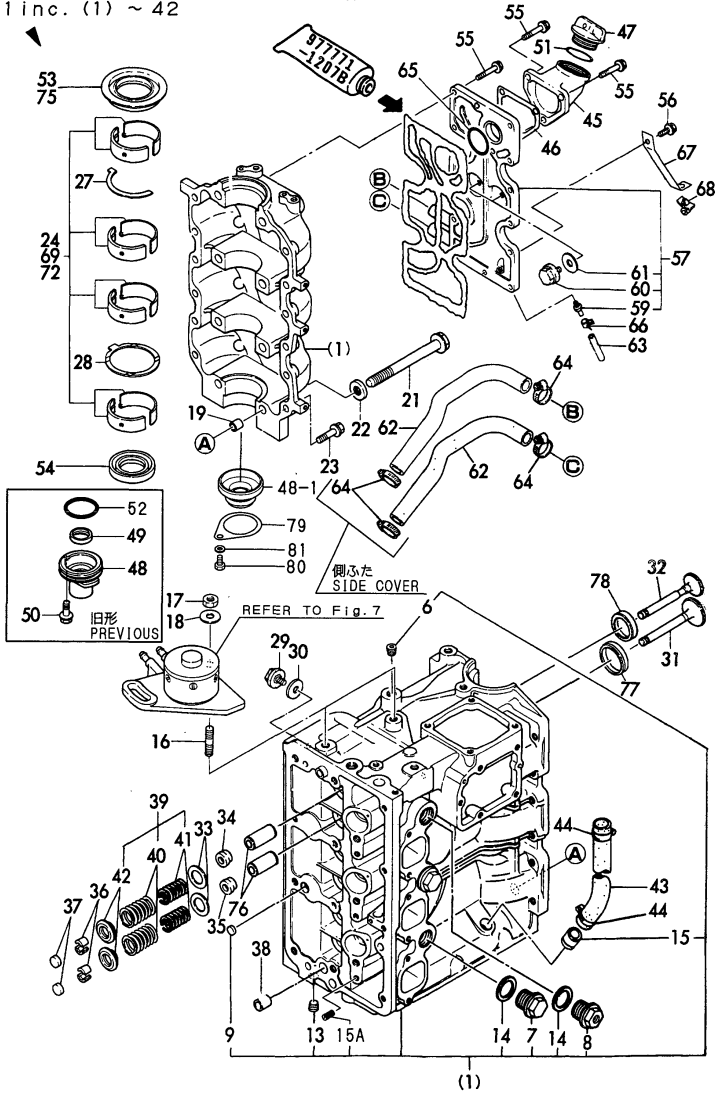
(A)=D36AX-E
(B)=D36AX-EP
(C)=D36AY-E
(D)=D36AY-EP
(E)=
(F)=

REF.	LEV.	PARTS NO.	DESCRIPTION	Q'TY						I	R
				(A)	(B)	(C)	(D)	(E)	(F)		
1	1	720380-01566	BLOCK ASSY, CYLINDER	1	1	1	1				
I 1-1	1	720380-01567	BLOCK ASSY, CYLINDER	1	1	1	1			S	
		(A=D/#03501) (B=D/#03448) (C=*1993.03) (D=*1993.03)									
6	3	124060-01050	PLUG PT1/8	1	1	1	1				
7	3	120380-01750	PLUG, BLIND	2	2	2	2				
8	3	120380-01760	PLUG, BLIND	1	1	1	1				
9	3	120380-01810	COVER, BLIND	1	1	1	1				
13	3	23871-020000	PLUG PT1/4,SCREW	1	1	1	1				
14	3	43400-500570	SEAL WASHER 24S	3	3	3	3				
I 14-1	3	22190-240002	SEAL WASHER 24S	3	3	3	3			R	
		(A=D/#03580) (B=D/#03582) (C=*1993.08) (D=*1993.08)									
15	3	120380-03140	JOINT,BREATHER	2	2	2	2				
I 15A	3	26273-080201	INSEAT 8X20	3	3	3	3			W	
		(A=D/#03841) (B=D/#03636) (C=*1994.03) (D=*1994.03)									
16	2	120270-01890	STUD, M 8X 18	2	2	2	2				
17	2	120270-01910	NUT	2	2	2	2				
18	2	120270-52170	WASHER	2	2	2	2				
19	2	120380-01380	BUSH 15X 12	2	2	2	2				
21	2	120380-02070	BOLT M12X108	8	8	8	8				
22	2	120380-02080	WASHER	8	8	8	8				
23	2	120270-02830	BOLT, M 8X 30	12	12	12	12				
24	2	720380-02800	MAIN BEARING SET	4	4	4	4				
27	2	120380-02171	BEARING, THRUST(B	1	1	1	1				
28	2	120380-02181	BEARING, THRUST(A	1	1	1	1				
29	2	120270-09302	ZINC, PROTECT	1	1	1	1				
30	2	120270-09310	GASKET	1	1	1	1				
31	2	120380-11101	SUC. VALVE	3	3	3	3				
I 31-1	2	120380-11102	VALVE,SUCTION	3	3	3	3			S	
		(A=D/#03501) (B=D/#03448) (C=*1993.03) (D=*1993.03)									
32	2	120380-11111	EXH. VALVE	3	3	3	3				
I 32-1	2	120380-11112	VALVE,EXHAUST	3	3	3	3			S	
		(A=D/#03501) (B=D/#03448) (C=*1993.03) (D=*1993.03)									
33	2	120380-11191	RETAINER	6	6	6	6				
34	2	120270-11340	SEAL, VALVE STEM	3	3	3	3				
35	2	124950-11340	SEAL, VALVE STEM(EXH	3	3	3	3				
36	2	120380-11350	COTTER	12	12	12	12				
37	2	120270-11370	CAP	6	6	6	6				
38	2	120270-01380	BUSH, KNOCK	2	2	2	2				
39	2	120380-11150	VALVE SPRING SET	6	6	6	6				
40	3	120380-11121	VALVE SPRING	6	6	6	6				
41	3	120380-11131	VALVE SPRING	6	6	6	6				
42	3	120380-11182	RETAINER, SPRING	6	6	6	6				
43	1	120380-03450	PIPE	1	1	1	1				
44	1	120380-03470	CLAMP 28	2	2	2	2				
I 44-1	1	120380-03490	CLAMP	2	2	2	2			R	
		(A=D/#03864) (B=D/#03685) (C=*1994.07) (D=*1994.07)									
45	1	120270-01501	DISCRIP	1	1	1	1				
46	1	120270-01531	GASKET	1	1	1	1				
47	1	124160-01751	COVER,FILLER	1	1	1	1				
48	1	120380-01850	CASE, OIL SEAL	1	1	1	1				
I 48-1	1	120380-01851	HOUSING, OIL SEAL	1	1	1	1			S	

Fig.1. CYLINDER BLOCK

Fig.1 シリンダブロック
CYLINDER BLOCK

見出しNo. 1は、見出しNo. (1) から42を含みます。
1 inc. (1) ~ 42



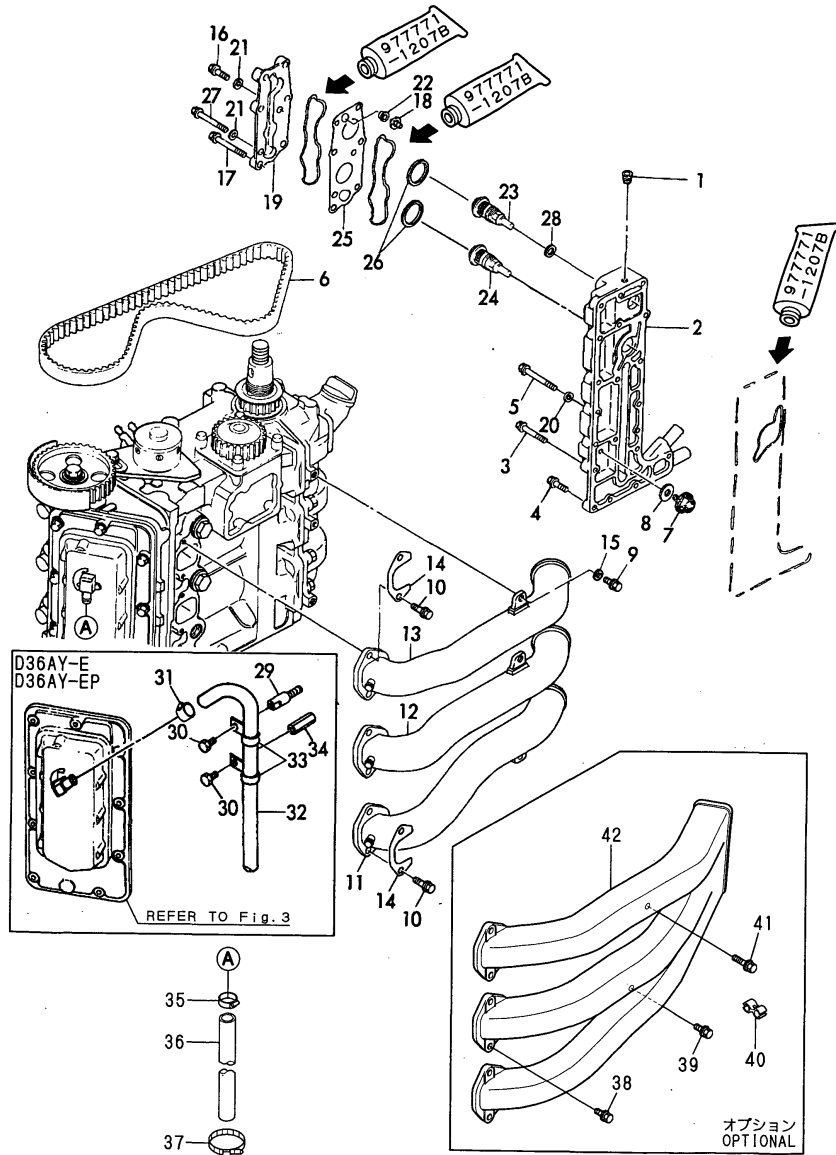
Remarks
(1) UNDER SIZED PART (0.25)
(2) UNDER SIZED PART (0.5)
(3) REPAIR PART, THIS PART IS USED BY
SPECIAL TOOL.

OCR10-G42501 1. CYLINDER BLOCK

(A)=D36AX-E
(B)=D36AX-EP
(C)=D36AY-E
(D)=D36AY-EP
(E)=
(F)=

REF.	LEV.	PARTS NO.	DESCRIPTION	Q'TY						I	R
				(A)	(B)	(C)	(D)	(E)	(F)		
I	49	(A=D/#03537) (B=D/#03548) (C=*1993.07) (D=*1993.07) 1 120380-01860	OIL SEAL	1	1	1	1			Z	
I	50	(A=D/#03537) (B=D/#03548) (C=*1993.07) (D=*1993.07) 1 120270-02610	BOLT M 6X 16	1	1	1	1			Z	
	51	(A=D/#03537) (B=D/#03548) (C=*1993.07) (D=*1993.07) 1 24321-000350	O-RING 1A G-35.0	1	1	1	1				
I	52	(A=D/#03537) (B=D/#03548) (C=*1993.07) (D=*1993.07) 1 24321-000500	O-RING 1A G-50.0	1	1	1	1			Z	
	53	(A=D/#03537) (B=D/#03548) (C=*1993.07) (D=*1993.07) 1 120380-02220	OIL SEAL	1	1	1	1				
	54	(A=D/#03537) (B=D/#03548) (C=*1993.07) (D=*1993.07) 1 120380-02230	OIL SEAL	1	1	1	1				
	55	1 120270-02630	BOLT M 6X 30	5	5	5	5				
	56	1 120270-02660	BOLT M 6X 20	12	12	12	12				
	57	1 720380-33500	COVER ASSY, COOLER	1	1	1	1				
	59	2 120380-33530	NIPPLE	1	1	1	1				
	60	2 120270-09302	ZINC, PROTECT	2	2	2	2				
	61	2 120270-09310	GASKET	2	2	2	2				
	62	1 120380-33502	PIPE	2	2	2	2				
	63	1 120380-33520	PIPE	1	1	1	1				
	64	1 120380-03470	CLAMP 28	4	4	4	4				
I	64-1	(A=D/#03864) (B=D/#03685) (C=*1994.07) (D=*1994.07) 1 120370-03470		4	4	4	4			R	
	65	1 24311-000320	O-RING 1A P-32.0	1	1	1	1				
	66	1 120380-33610	CLAMP	1	1	1	1				
	67	1 120380-33620	STAY, DRAIN HORSE	1	1	1	1				
	68	1 196630-06770	CLAMP	1	1	1	1				
	69	1 720380-02850	MAIN BEARING US=0.25	4	4	4	4				1
	72	1 720380-02860	MAIN BEARING US=0.50	4	4	4	4				2
	75	(A=D/#03501) (B=D/#03448) (C=*1993.03) (D=*1993.03) 1 120380-02310	SEAL, CRNK. US50 OIL	1	1	1	1				2
	76	1 120380-11960	VALVE GUIDE	6	6	6	6				3
	77	1 120380-11970	SEAT, SUCTION VALVE	3	3	3	3				3
I	77-1	(A=D/#03501) (B=D/#03448) (C=*1993.03) (D=*1993.03) 1 120380-11910	SEAT, SUC. VALVE(OS)	3	3	3	3			S	3
	78	1 120380-11980	SEAT, EXHAUST VALVE	3	3	3	3				3
I	78-1	(A=D/#03501) (B=D/#03448) (C=*1993.03) (D=*1993.03) 1 120380-11920	SEAT, EXH. VALVE(OS)	3	3	3	3			S	3
I	79	(A=D/#03537) (B=D/#03548) (C=*1993.07) (D=*1993.07) 1 120380-01900	RETAINER	1	1	1	1			W	
I	80	(A=D/#03537) (B=D/#03548) (C=*1993.07) (D=*1993.07) 1 120270-02600	BOLT M 6X 12	1	1	1	1			W	
I	81	(A=D/#03537) (B=D/#03548) (C=*1993.07) (D=*1993.07) 1 196630-10350	WASHER 6	1	1	1	1			W	

Fig.2. SIDE COVER & INTAKE PIPE

Fig.2 側蓋&吸気パイプ
SIDE COVER & INTAKE PIPE

Remarks
(1)OPTIONAL

OCR10-G42501 2. SIDE COVER & INTAKE PIPE

(A)=D36AX-E
(B)=D36AX-EP
(C)=D36AY-E

(D)=D36AY-EP
(E)=
(F)=

REF.	LEV.	PARTS NO.	DESCRIPTION	Q'TY						I	R
				(A)	(B)	(C)	(D)	(E)	(F)		
1	1	124060-01050	PLUG PT1/8	1	1	1	1				
2	1	120380-01404	SIDE COVER ASSY	1	1	1	1				
3	1	120270-02630	BOLT M 6X 30	6	6	6	6				
4	1	120270-02660	BOLT M 6X 20	7	7	7	7				
5	1	26113-060452	BOLT M 6X 45	1	1	1	1				
I	5-1	1	120270-02750	BOLT M6X45	1	1	1	1			R
(A=D/#03874) (B=D/#03876) (C=D/#04021) (D=D/#04051)											
6	1	120380-01430	BELT	1	1	1	1				
7	1	120270-09302	ZINC, PROTECT	2	2	2	2				
8	1	120270-09310	GASKET	2	2	2	2				
9	1	120270-02610	BOLT M 6X 16	3	3	3	3				
10	1	120270-02660	BOLT M 6X 20	6	6	6	6				
11	1	120380-12010	PIPE ASSY(A), SUC.	1	1	1	1				
12	1	120380-12020	PIPE ASSY(B), SUC.	1	1	1	1				
13	1	120380-12030	PIPE ASSY(C), SUC.	1	1	1	1				
14	1	120380-12050	CLAMP	3	3	3	3				
15	1	120270-12180	WASHER	3	3	3	3				
16	1	120270-02660	BOLT M 6X 20	2	2	2	2				
17	1	120270-02720	BOLT, M 6X 50	4	4	4	4				
18	1	120270-42071	VALVE	1	1	1	1				
19	1	120380-49223	COVER, THERMOSTAT	1	1	1	1				
20	1	196630-10350	WASHER 6	1	1	1	1				
21	1	196630-10350	WASHER 6	2	2	2	2				
22	1	120380-42090	CAP, VALVE	1	1	1	1				
23	1	120270-49191	THERMOMETER	1	1	1	1				
24	1	120270-49203	THERMOSTAT	1	1	1	1				
25	1	120380-49260	PLATE	1	1	1	1				
26	1	120370-49290	SPECER	2	2	2	2				
27	1	26113-060552	BOLT	2	2	2	2				
I	27-1	1	120270-02760	BOLT	2	2	2	2			R
(A=D/#03874) (B=D/#03876) (C=D/#04021) (D=D/#04051)											
28	1	43400-500390	SEAL WASHER 6S	1	1	1	1				
I	28-1	1	22190-060002	SEAL WASHER 6S	1	1	1	1			R
(A=D/#03580) (B=D/#03582) (C=*1993.08) (D=*1993.08)											
29	1	120270-02490	BOLT				1	1			
30	1	120270-02600	BOLT M 6X 12				2	2			
31	1	120270-03110	CLAMP				1	1			
32	1	120370-03180	PIPE, BREATHER				1	1			
33	1	120270-03250	RETAINER				3	3			
34	1	120270-76520	SPACER				1	1			
I	35	1	120270-03110	CLAMP	1	1					W
(A=D/#03841) (B=D/#03636)											
I	36	1	120370-03190	PIPE, BREATHER	1	1					W
(A=D/#03841) (B=D/#03636)											
I	37	1	194250-51660	BAND 250	2	2					W
(A=D/#03841) (B=D/#03636)											
I	38	1	120270-02660	BOLT M 6X 20	6	6	6	6			W 1
(A=D/#04386) (B=D/#04407) (C=D/#04147) (D=D/#04054)											
I	39	1	120270-02660	BOLT M 6X 20	1	1	1	1			W 1
(A=D/#04386) (B=D/#04407) (C=D/#04147) (D=D/#04054)											
I	40	1	120270-02730	BOLT M 6X 45	1	1	1	1			W 1

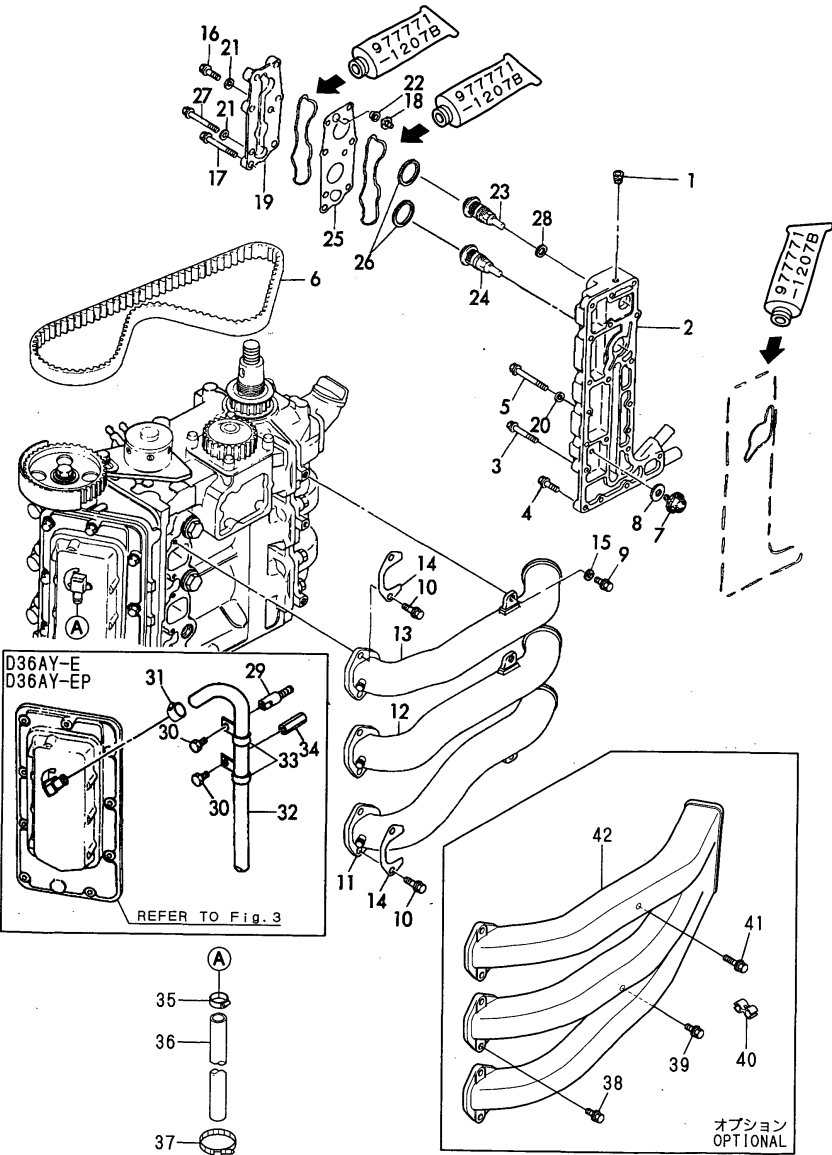
N:Old New, Q:Old New, R:Old New, S:Old New, W:Add, Z:Discontinued, F:Interchangeable by set, K:Q'ty Change

++ CONTINUE ++

(C)Copy Rights YANMAR CO.,LTD.

Fig.2. SIDE COVER & INTAKE PIPE

Fig.2 側蓋&吸気パイプ
SIDE COVER & INTAKE PIPE



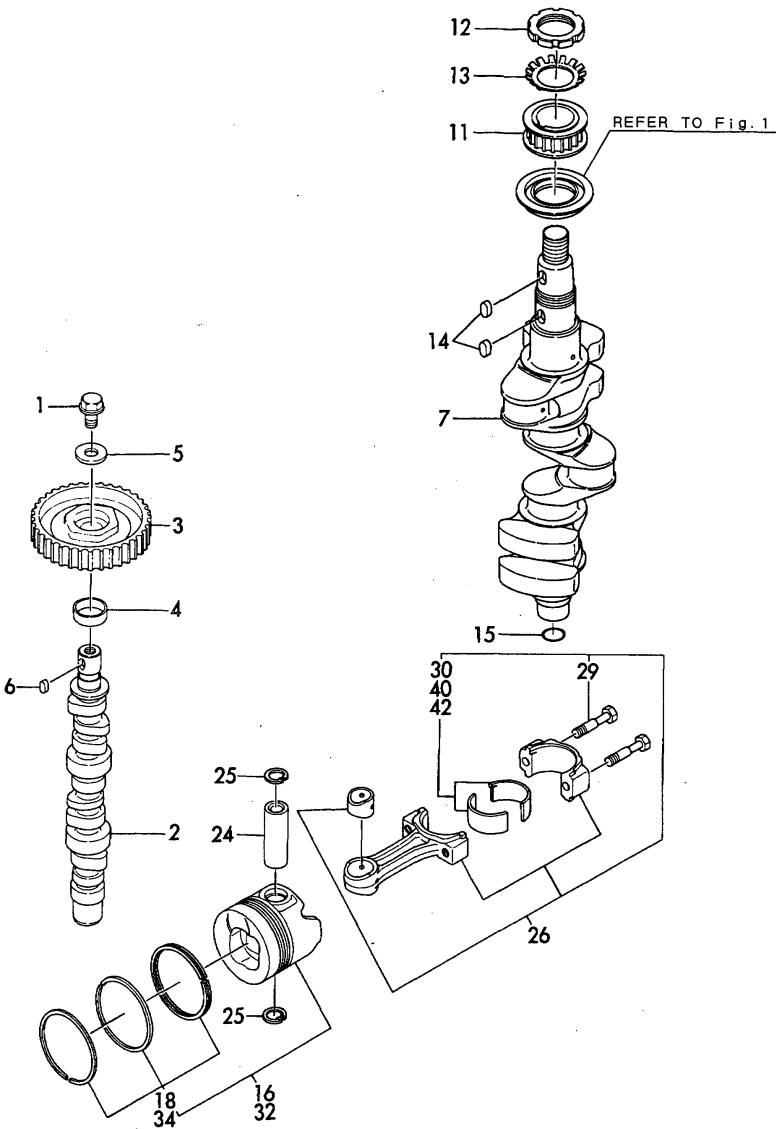
OCR10-G42501 2. SIDE COVER & INTAKE PIPE

REF.	LEV.	PARTS NO.	DESCRIPTION	Q'TY						I	R
				(A)	(B)	(C)	(D)	(E)	(F)		
I	41	(A=D/#04386) (B=D/#04407) 196630-06790	(C=D/#04147) (D=D/#04054) CLAMP	1	1	1	1			W	1
I	42	(A=D/#04386) (B=D/#04407) 120380-1220078	(C=D/#04147) (D=D/#04054) PIPE, AIR INTAKE	1	1	1	1			W	1

Remarks
(1)OPTIONAL

Fig.4. CRANK SHAFT & PISTON

Fig.4 クランクシャフト&ピストン
CRANK SHAFT & PISTON



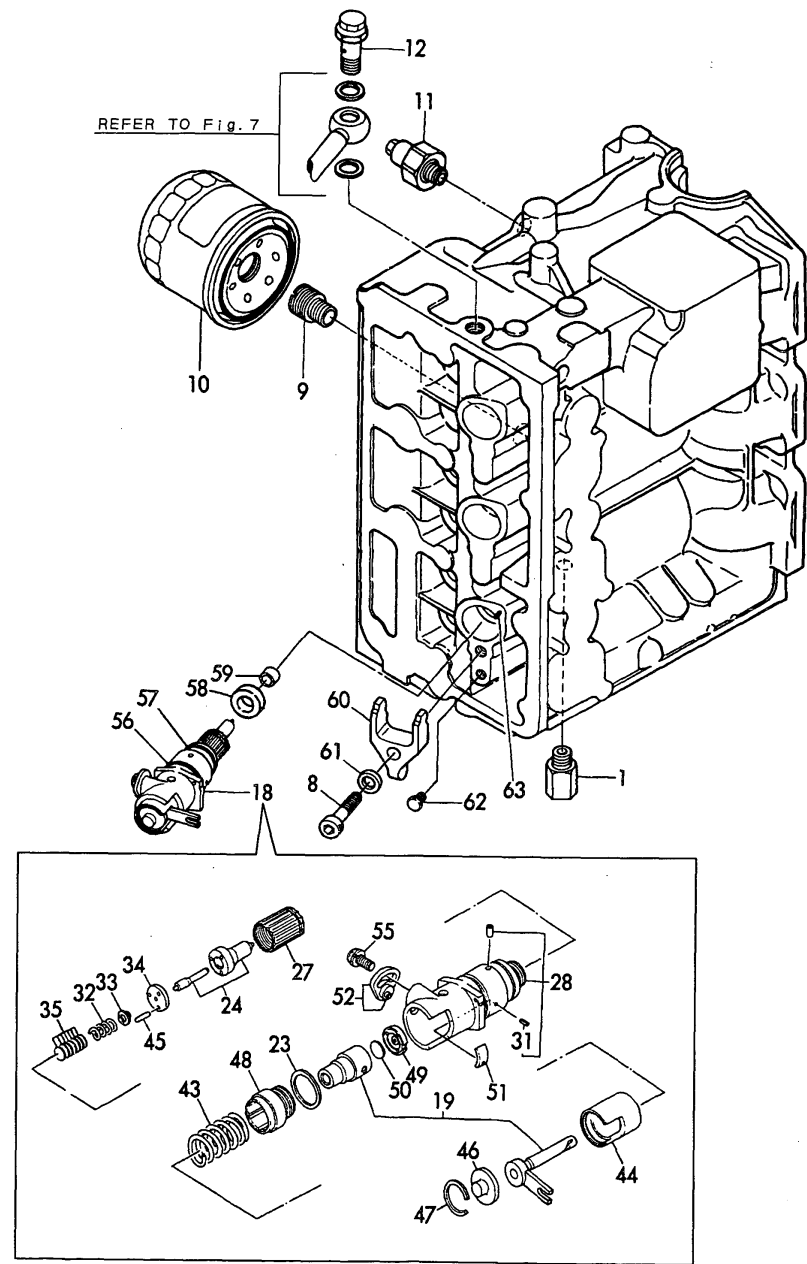
Remarks
(1)OVER-SIZED PART
(2)UNDER-SIZED PART

OCR10-G42501 4. CRANK SHAFT & PISTON

REF.	LEV.	PARTS NO.	DESCRIPTION	Q'TY						I	R
				(A)	(B)	(C)	(D)	(E)	(F)		
1	1	120270-02930	BOLT M10X 25	1	1	1	1				
2	1	120385-14011	CAMSHAFT	1	1	1	1				
3	1	120380-14102	PULLEY, CAM	1	1	1	1				
4	1	120380-14110	SPACER	1	1	1	1				
5	1	120380-14161	WASHER	1	1	1	1				
6	1	22512-050120	KEY 5X 12	1	1	1	1				
7	1	120380-21051	CRANKSHAFT ASSY.	1	1	1	1				
11	1	120380-21241	PULLEY, CRANK	1	1	1	1				
12	1	120380-21580	NUT	1	1	1	1				
13	1	120380-21610	WASHER	1	1	1	1				
14	1	120270-21290	KEY 7X 14	2	2	2	2				
15	1	24311-000180	O-RING 1A P-18.0	1	1	1	1				
16	1	720380-22720	PISTON W/RING	3	3	3	3				
18	2	720380-22500	PISTON RING ASSY.	3	3	3	3				
24	1	129150-22300	PIN, PISTON(D26,L66)	3	3	3	3				
25	1	22252-000260	CIRCLIP 26	6	6	6	6				
26	1	720380-23100	ROD, ASSY CONNECTING	3	3	3	3				
29	2	121550-23200	BOLT, CONNECTING ROD	6	6	6	6				
30	2	720380-23600	BEARING PIN	3	3	3	3				
32	1	720380-22820	PISTON W/RING 0.25OS	3	3	3	3				1
34	2	720380-22540	PISTON RING 0.25(OS)	3	3	3	3				1
40	1	720380-23610	BEARING PIN 0.25	3	3	3	3				2
42	1	720380-23620	BEARING PIN 0.5	3	3	3	3				2

Fig.6. LUB.OIL STRAINER & PRESS.CONTROL VALVE

Fig.6 潤滑油フィルタ&調圧弁
LUB.OIL STRAINER & PRESS.CONTROL VALVE



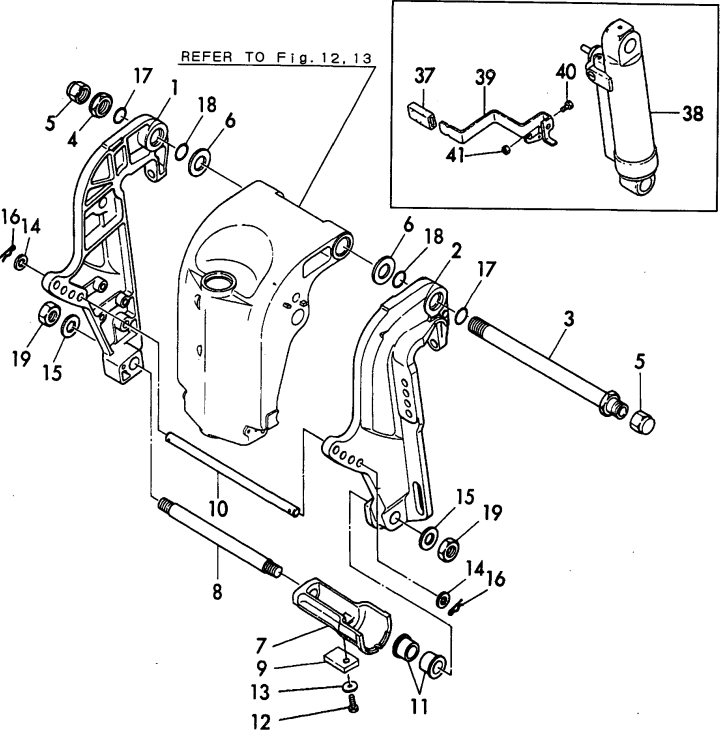
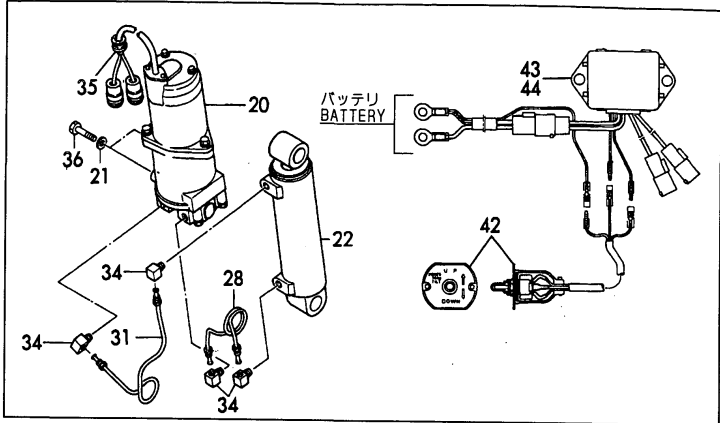
6. LUB.OIL STRAINER & PRESS.CONTROL VALVE

(A)=D36AX-E (D)=D36AY-EP
(B)=D36AX-EP (E)=
(C)=D36AY-E (F)=

REF.	LEV.	PARTS NO.	DESCRIPTION	Q'TY						I	R
				(A)	(B)	(C)	(D)	(E)	(F)		
1	1	120270-34010	VALVE	1	1	1	1				
8	1	26450-080352	BOLT M 8X 35	3	3	3	3				
9	1	120270-35140	BOLT	1	1	1	1				
10	1	129150-35151	FILTER 80X80L	1	1	1	1				
11	1	121252-39450	SENDER, OIL PRESSURE	1	1	1	1				
12	1	120270-59100	VALVE, FUEL OIL	1	1	1	1				
18	1	720380-53500	UNIT INJECTOR ASSY	3	3	3	3				
19	2	120380-51102	PLUNGER W/BARREL	3	3	3	3				
23	2	172100-51290	PACKING	3	3	3	3				
24	2	120380-53001	VALVE, FUEL INJECT.	3	3	3	3				
I 24-1	2	120380-53002	NOZZLE ASSY,F.INJECT	3	3	3	3				R
(A=D/#03799) (B=D/#03856) (C=D/#03802) (D=*1995.07)											
27	2	114250-53080	NUT, NOZZLE CASE	3	3	3	3				
28	2	120270-53091	BODY, UNIT INJECTOR	3	3	3	3				
31	3	22351-020004	SPRING PIN 2X 4	3	3	3	3				
32	2	120270-53120	SPRING	3	3	3	3				
33	2	120270-53130	SEAT, SPRING	3	3	3	3				
34	2	114250-53140	PLATE, STOP	3	3	3	3				
35	2	120270-53150	SHIM SET	3	3	3	3				
43	2	120380-53160	SPRING	3	3	3	3				
44	2	120380-53200	TAPPET	3	3	3	3				
45	2	114250-53210	PIN	6	6	6	6				
46	2	120380-53641	RETAINER	3	3	3	3				
47	2	120270-53220	CIRCLIP	3	3	3	3				
48	2	120270-53260	HOLDER, BARREL	3	3	3	3				
49	2	120270-53310	CASE, VALVE	3	3	3	3				
50	2	120270-53320	VALVE	3	3	3	3				
51	2	120270-53400	PROTECTOR	3	3	3	3				
52	2	120270-53500	PLATE, GUIDE	3	3	3	3				
55	2	26023-050102	SCREW M 5X 10	3	3	3	3				
56	1	120270-53350	O-RING (27.1/23.3)	3	3	3	3				
57	1	120270-53360	O-RING (24.8/21.0)	3	3	3	3				
58	1	120270-11841	GASKET	3	3	3	3				
59	1	120270-11892	PROTECTOR	3	3	3	3				
I 59-1	1	120270-11893	PROTECTOR	3	3	3	3				N
(A=D/#04439) (B=D/#04432) (C=D/#04147) (D=D/#04054)											
60	1	120270-54401	RETAINER	3	3	3	3				
61	1	120270-54410	WASHER	3	3	3	3				
62	1	120270-54450	BOLT	3	3	3	3				
63	1	22351-025012	SPRING PIN 2.5X12	3	3	3	3				

Fig.10. CLAMP BRACKET

Fig. 10 クランプブラケット
CLAMP BRACKET



(A)=D36AX-E
(B)=D36AX-EP
(C)=D36AY-E
(D)=D36AY-EP
(E)=
(F)=

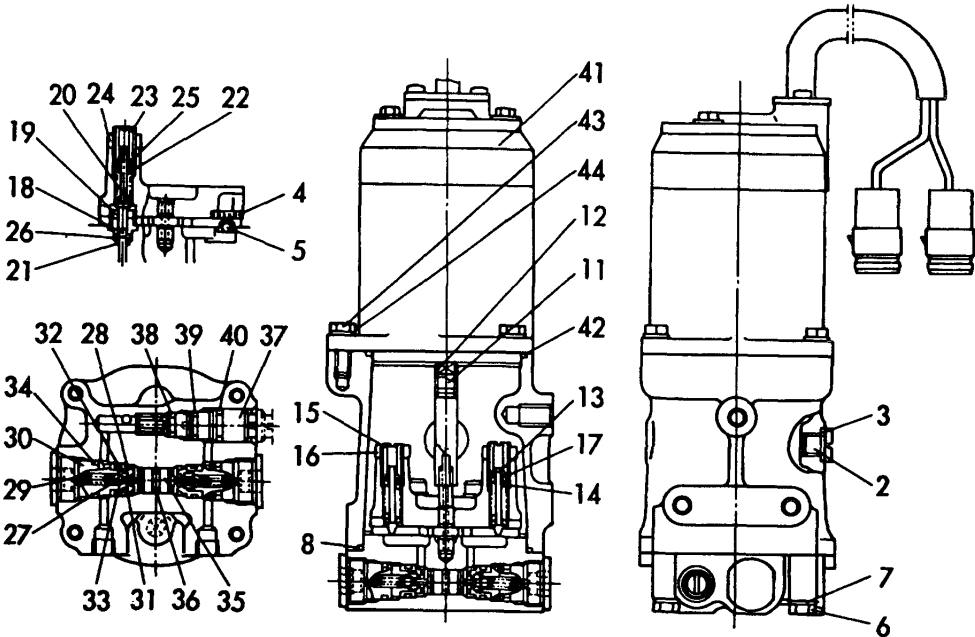
REF.	LEV.	PARTS NO.	DESCRIPTION	Q'TY						I	R
				(A)	(B)	(C)	(D)	(E)	(F)		
1	1	196640-01031-1	BRACKET(L) (GRAY:78	1	1	1	1				
2	1	196640-01041-1	BRACKET(R) (GRAY:78	1	1	1	1				
3	1	196630-01211	TUBE	1	1	1	1				
4	1	196630-01220	NUT	1	1	1	1				
5	1	196630-01230	CAP	2	2	2	2				
6	1	196630-01240	WASHER	2	2	2	2				
7	1	196640-01511-1	SUPPORT	1	1	1	1				
8	1	196640-01520	BOLT	1	1	1	1				
9	1	196640-01531	ZINK ANTI-CORROSIVE	1	1	1	1				
10	1	196640-01611	THRUST ROD	1	1	1	1				
11	1	196640-03310	BUSH	2	2	2	2				
12	1	196630-10120	BOLT 6X25	1	1	1	1				
13	1	196630-10350	WASHER 6	1	1	1	1				
14	1	196640-10410	WASHER 12	2	2	2	2				
15	1	196640-10450	WASHER 16	2	2	2	2				
16	1	196640-10750	PIN	2	2	2	2				
17	1	24311-000224	O-RING 1A P-22.4	2	2	2	2				
18	1	24341-000224	O-RING 1A S-22.4	2	2	2	2				
19	1	26773-160002	LOCK NUT M16	2	2	2	2				
20	1	196640-07410-1	POWER UNIT(PU-3A	1	1	1	1				1
21	1	196630-10370	WASHER 8	3	3	3	3				1
22	1	196640-07600	HYD. CYLINDER ASSY.	1	1	1	1				1
28	1	196640-07912	PIPE(A)	1	1	1	1				1
31	1	196640-07942	PIPE(B)	1	1	1	1				1
34	1	196640-07961	ADAPTOR	4	4	4	4				1
35	1	196640-07991	GROMMET	1	1	1	1				1
36	1	196640-10310	BOLT M 8X 35	3	3	3	3				1
37	1	196640-03850	COVER, KNOB	1	1	1	1				1
38	1	196640-07110-1	SHOCK-ABSOBOR	1	1	1	1				1
39	1	196640-07141	LEVER	1	1	1	1				1
40	1	196640-07160	BOLT M 6	1	1	1	1				1
41	1	26753-060002	NUT M 6	1	1	1	1				1
42	1	196640-07881	TILT SWITCH	1	1	1	1				1
43	1	196640-07861	RELEY BOX	1	1	1	1				1
44	2	196398-05620	RELEY 12V	1	1	1	1				1

Remarks
(1)OPTIONAL

Fig.11. POWER UNIT COMPONENT PART(PU-3)

Fig. 11 パワーユニットインナーパーツ (PU-3)
POWER UNIT COMPONENT PART (PU - 3)

見出しNo. 1は、見出しNo. 2から44を含みます。
1 inc. 2 ~ 44

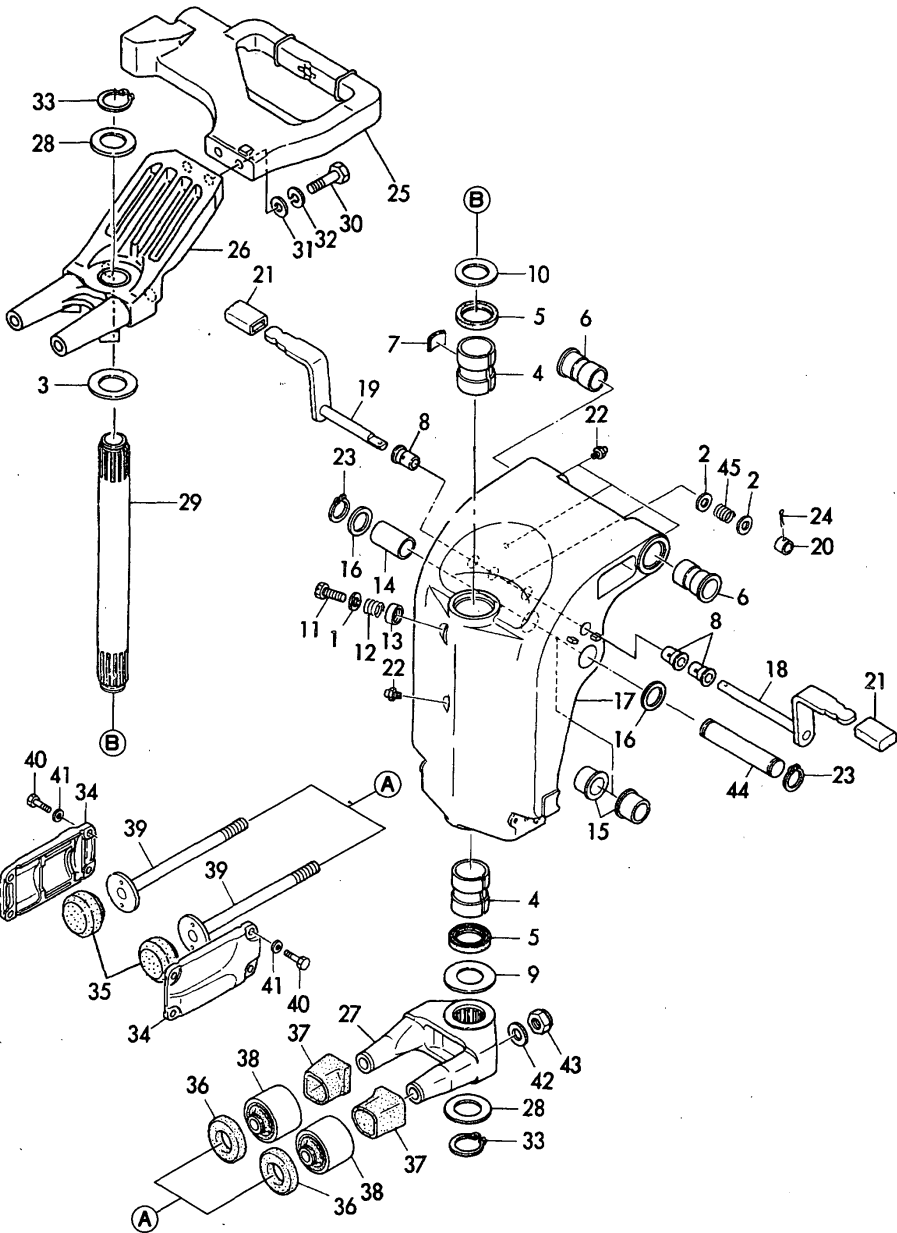


(A)=D36AX-E
(B)=D36AX-EP
(C)=D36AY-E
(D)=D36AY-EP
(E)=
(F)=

REF.	LEV.	PARTS NO.	DESCRIPTION	Q'TY						I	R
				(A)	(B)	(C)	(D)	(E)	(F)		
1	1	196640-07410-1	POWER UNIT(PU-3A	1	1	1	1				
2	2	196398-01030	PLUG 10	1	1	1	1				
3	2	196398-01040	GASKET	1	1	1	1				
4	2	194630-43220	STRAINER	2	2	2	2				
5	2	24190-060001	BALL 3/16	2	2	2	2				
6	2	196398-01150	BOLT M 6X 32	4	4	4	4				
7	2	22113-060000	WASHER 6	4	4	4	4				
8	2	24341-000750	O-RING 1A S-75.0	1	1	1	1				
11	2	196399-01252	JOINT	1	1	1	1				
12	2	196399-01270	HOLDER	1	1	1	1				
13	2	XV550003172	VALVE	2	2	2	2				
14	2	XV550003200	SPRING	2	2	2	2				
15	2	XP654001620	SCREW	2	2	2	2				
16	2	26776-100002	LOCK NUT M10 PLATED	2	2	2	2				
17	2	22117-040000	WASHER 4	2	2	2	2				
18	2	24190-050001	BALL 5/32	1	1	1	1				
19	2	196398-01300	HOLDER	1	1	1	1				
20	2	196398-01310	SUPPORT	1	1	1	1				
21	2	196398-01340	SEAT	1	1	1	1				
22	2	XV550003200	SPRING	1	1	1	1				
23	2	XP654001620	SCREW	1	1	1	1				
24	2	26776-100002	LOCK NUT M10 PLATED	1	1	1	1				
25	2	22117-040000	WASHER 4	1	1	1	1				
26	2	24345-000070	O-RING 1B S7.0	1	1	1	1				
27	2	24190-060001	BALL 3/16	2	2	2	2				
28	2	196398-01400	HOLDER	2	2	2	2				
29	2	196399-01460	SPRING	2	2	2	2				
30	2	196398-01410	PLUG	2	2	2	2				
31	2	196398-01340	SEAT	2	2	2	2				
32	2	24345-000070	O-RING 1B S7.0	2	2	2	2				
33	2	24315-000110	O-RING 1B P-11.0	2	2	2	2				
34	2	24315-000125	O-RING 1B P-12.5	2	2	2	2				
35	2	196398-01500	PISTON	1	1	1	1				
36	2	24311-000080	O-RING 1A P-8.0	1	1	1	1				
37	2	196398-01600	VALVE	1	1	1	1				
38	2	24315-000070	O-RING 1B P-7.0	1	1	1	1				
39	2	24315-000090	O-RING 1B P- 9.0	1	1	1	1				
40	2	24315-240100	O-RING 1B P-10A	1	1	1	1				
41	2	196398-05070	MOTOR	1	1	1	1				
42	2	24341-000670	O-RING 1A S-67.0	1	1	1	1				
43	2	196398-05130	BOLT M 6X 18	3	3	3	3				
44	2	196398-01160	WASHER 6	3	3	3	3				

Fig.12. SWIVEL/STEERING BRACKET

Fig. 12 スイベル/ステアリングブラケット
SWIVEL/STEERING BRACKET



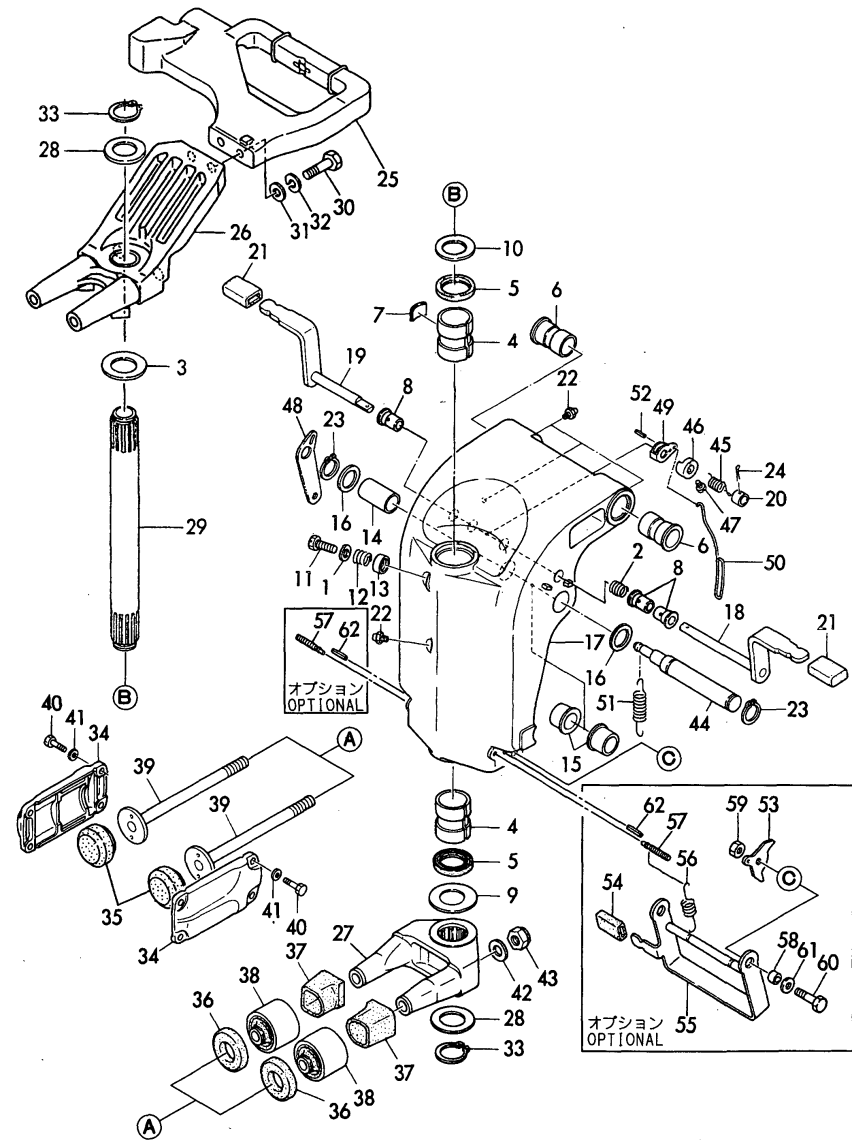
OCR10-G42501 12. SWIVEL/STEERING BRACKET

(A)=D36AX-E
(B)=D36AX-EP
(C)=D36AY-E
(D)=D36AY-EP
(E)=
(F)=

REF.	LEV.	PARTS NO.	DESCRIPTION	Q'TY						I	R
				(A)	(B)	(C)	(D)	(E)	(F)		
1	1	196630-01780	COLLAR	1	1	1	1				
2	1	196311-06900	WASHER	2	2	2	2				
3	1	196640-03060	WASHER	1	1	1	1				
4	1	196640-03070	BUSH	2	2	2	2				
5	1	196640-03100	SEAL	2	2	2	2				
6	1	196630-03120	BUSH	2	2	2	2				
7	1	196640-03171	PLATE	1	1	1	1				
8	1	196640-03180	BUSH	3	3	3	3				
9	1	196640-03200	WASHER	1	1	1	1				
10	1	196640-03230	SPACER	1	1	1	1				
11	1	196630-03250	BOLT	1	1	1	1				
12	1	196630-03260	SPRING	1	1	1	1				
13	1	196630-03270	COVER	1	1	1	1				
14	1	196640-03300	BUSH	1	1	1	1				
15	1	196640-03310	BUSH	2	2	2	2				
16	1	196640-03330	WASHER	2	2	2	2				
17	1	196640-03350	BRACKET	1	1	1	1				
18	1	196640-03601	LEVER	1	1	1	1				
19	1	196640-03611	LEVER	1	1	1	1				
20	1	196630-03632	COLLOR	1	1	1	1				
21	1	196640-03850	COVER, KNOB	2	2	2	2				
22	1	196630-10850	NIPPLE ,MT6X1	6	6	6	6				
23	1	22243-000180	CIRCLIP 18	2	2	2	2				
24	1	22413-320200	COTTOR PIN 3.2X20	1	1	1	1				
25	1	196640-05051-1	BRACKET (GRAY:78	1	1	1	1				
I 25-1	1	196640-05052-1	BRACKET (GRAY:78	1	1	1	1				N
(A=D/#03910) (B=D/#03898) (C=D/#04021) (D=D/#04051)											
26	1	196640-05060-1	BRACKET, STEERING	1	1	1	1				
27	1	196640-05081-1	BRACKET (GRAY:78	1	1	1	1				
28	1	196640-05110	WASHER	2	2	2	2				
29	1	196640-05160	PIVOT SHAFT	1	1	1	1				
30	1	196630-10330	BOLT 10X35	2	2	2	2				
31	1	196630-10390	WASHER 10	2	2	2	2				
32	1	22213-100000	SPRING WASHER 10	2	2	2	2				
33	1	22243-000260	CIRCLIP 26	2	2	2	2				
34	1	196640-05212-1	BRACKET (GRAY:78	2	2	2	2				
35	1	196640-05400	RUBBER	2	2	2	2				
36	1	196640-05430	DUMPER	2	2	2	2				
37	1	196640-05440	DUMPER	2	2	2	2				
38	1	196640-05460	RUBBER	2	2	2	2				
39	1	196640-05471	BOLT 12X162	2	2	2	2				
40	1	196630-10110	BOLT 6X20	8	8	8	8				
41	1	196630-10350	WASHER 6	8	8	8	8				
42	1	196640-10410	WASHER 12	2	2	2	2				
43	1	26343-120002	U-NUT M12	2	2	2	2				
44	1	196640-03320	PIN	1	1	1	1				
45	1	196640-03620	SPRING	1	1	1	1				

Fig.13. SWIVEL/STEERING BRACKET

Fig. 13 スイベル/ステアリングブラケット
SWIVEL/STEERING BRACKET



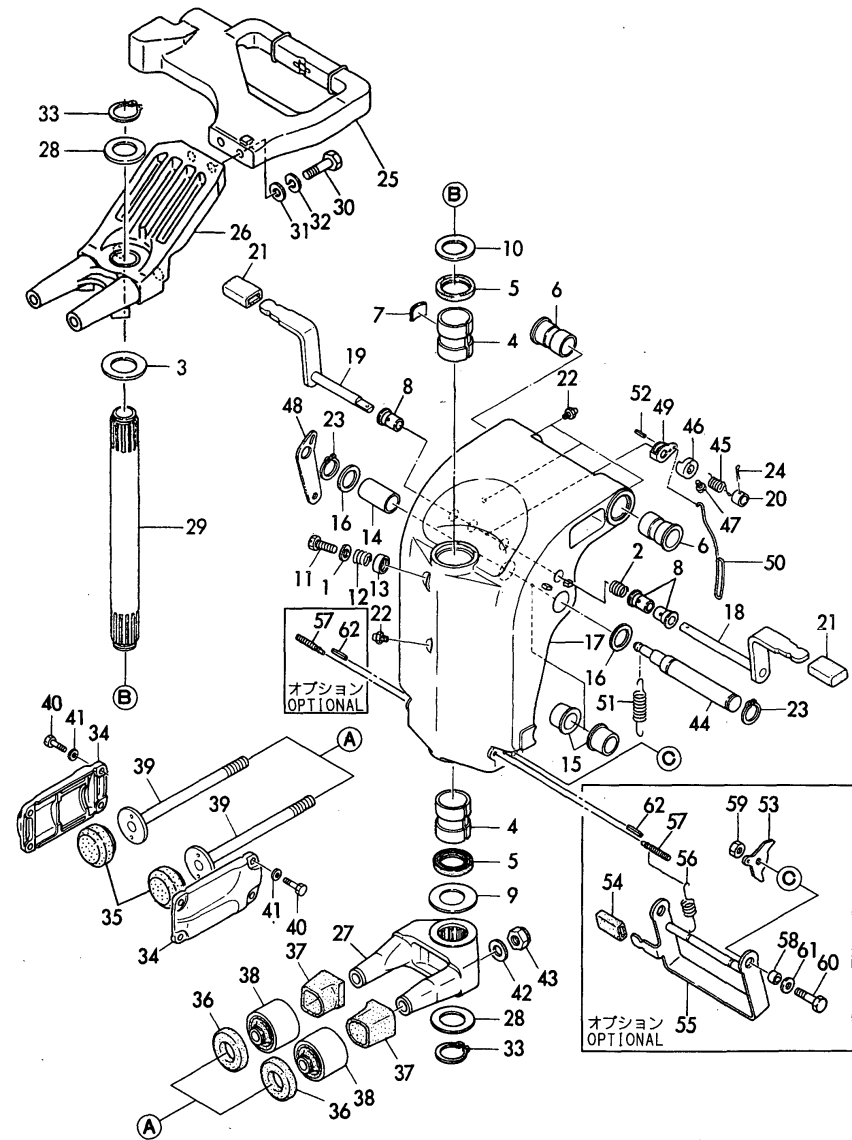
Remarks
(1)OPTIONAL

(A)=D36AX-E
(B)=D36AX-EP
(C)=D36AY-E
(D)=D36AY-EP
(E)=
(F)=

REF.	LEV.	PARTS NO.	DESCRIPTION	Q'TY						I	R
				(A)	(B)	(C)	(D)	(E)	(F)		
1	1	196630-01780	COLLAR	1	1	1	1				
2	1	196640-03640	WASHER	1	1	1	1				
3	1	196640-03060	WASHER	1	1	1	1				
4	1	196640-03070	BUSH	2	2	2	2				
5	1	196640-03100	SEAL	2	2	2	2				
6	1	196630-03120	BUSH	2	2	2	2				
7	1	196640-03171	PLATE	1	1	1	1				
8	1	196640-03180	BUSH	3	3	3	3				
9	1	196640-03200	WASHER	1	1	1	1				
10	1	196640-03230	SPACER	1	1	1	1				
11	1	196630-03250	BOLT	1	1	1	1				
12	1	196630-03260	SPRING	1	1	1	1				
13	1	196630-03270	COVER	1	1	1	1				
14	1	196640-03300	BUSH	1	1	1	1				
15	1	196640-03310	BUSH	2	2	2	2				
16	1	196640-03330	WASHER	2	2	2	2				
17	1	196640-03350-1	BRACKET	1	1	1	1				
18	1	196640-03601	LEVER	1	1	1	1				
19	1	196640-03611	LEVER	1	1	1	1				
20	1	196630-03632	COLLOR	1	1	1	1				
21	1	196640-03850	COVER, KNOB	2	2	2	2				
22	1	196630-10850	NIPPLE ,MT6X1	6	6	6	6				
23	1	22243-000180	CIRCLIP 18	2	2	2	2				
24	1	22413-320200	COTTOR PIN 3.2X20	1	1	1	1				
25	1	196640-05051-1	BRACKET (GRAY:78	1	1	1	1				
I 25-1	1	196640-05052-1	BRACKET (GRAY:78	1	1	1	1				N
(A=D/#03910) (B=D/#03898) (C=D/#04021) (D=D/#04051)											
26	1	196640-05060-1	BRACKET, STEERING	1	1	1	1				
27	1	196640-05081-1	BRACKET (GRAY:78	1	1	1	1				
28	1	196640-05110	WASHER	2	2	2	2				
29	1	196640-05160	PIVOT SHAFT	1	1	1	1				
30	1	196630-10330	BOLT 10X35	2	2	2	2				
31	1	196630-10390	WASHER 10	2	2	2	2				
32	1	22213-100000	SPRING WASHER 10	2	2	2	2				
33	1	22243-000260	CIRCLIP 26	2	2	2	2				
34	1	196640-05212-1	BRACKET (GRAY:78	2	2	2	2				
35	1	196640-05400	RUBBER	2	2	2	2				
36	1	196640-05430	DUMPER	2	2	2	2				
37	1	196640-05440	DUMPER	2	2	2	2				
38	1	196640-05460	RUBBER	2	2	2	2				
39	1	196640-05471	BOLT 12X162	2	2	2	2				
40	1	196630-10110	BOLT 6X20	8	8	8	8				
41	1	196630-10350	WASHER 6	8	8	8	8				
42	1	196640-10410	WASHER 12	2	2	2	2				
43	1	26343-120002	U-NUT M12	2	2	2	2				
44	1	196640-03370	PIN	1	1	1	1				
45	1	196640-03650	SPRING	1	1	1	1				
46	1	196640-03660	HOOK	1	1	1	1				
47	1	196630-03670	BOLT	1	1	1	1				
48	1	196640-03730	LEVER	1	1	1	1				
49	1	196640-03760	LEVER	1	1	1	1				

Fig.13. SWIVEL/STEERING BRACKET

Fig. 13 スイベル/ステアリングブラケット
SWIVEL/STEERING BRACKET



Remarks
(1)OPTIONAL

OCR10-G42501 13. SWIVEL/STEERING BRACKET

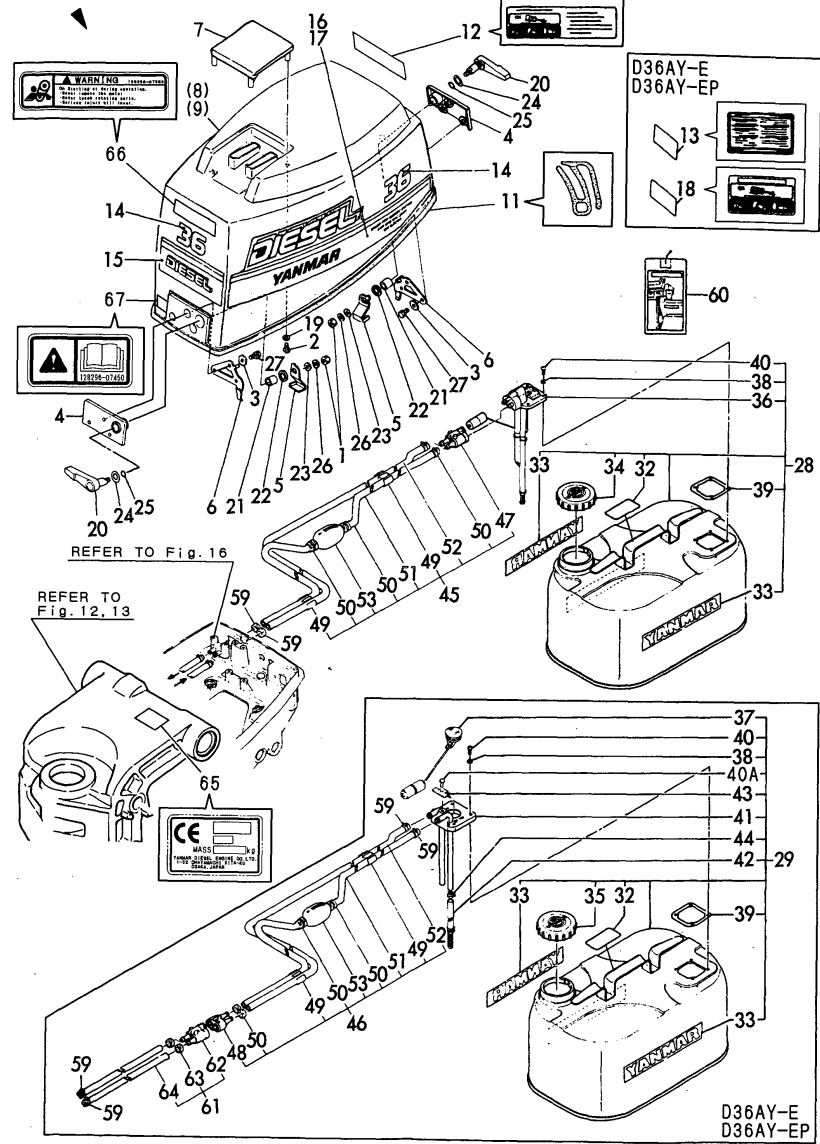
(A)=D36AX-E
(B)=D36AX-EP
(C)=D36AY-E
(D)=D36AY-EP
(E)=
(F)=

REF.	LEV.	PARTS NO.	DESCRIPTION	Q'TY						I	R
				(A)	(B)	(C)	(D)	(E)	(F)		
50	1	196640-03770	ROD	1	1	1	1				
51	1	196640-03780	SPRING	1	1	1	1				
52	1	196640-10590	SPRING PIN 3X 16	1	1	1	1				
53	1	196640-03840	STOPPER	2	2	2	2				1
54	1	196640-03850	COVER, KNOB	1	1	1	1				1
55	1	196640-03860	ARM	1	1	1	1				1
56	1	196640-03870	SPRING	2	2	2	2				1
57	1	196640-03880	HOOK	2	2	2	2				1
58	1	196640-03890	COLLOR	2	2	2	2				1
59	1	196630-10050	NUT M 8	2	2	2	2				1
60	1	196630-10220	BOLT 8X30	2	2	2	2				1
61	1	196630-10370	WASHER 8	2	2	2	2				1
62	1	196630-10580	SPRING PIN 4X20	2	2	2	2				1

Fig.14. TOP COWLING & FUEL TANK

Fig. 14 トップカウリング&燃料タンク
TOP COWLING & FUEL TANK

見出しNo. 8, 9は、見出しNo. (8) から18を含みます。
8, 9 inc. (8) ~ 18



Remarks
(1)OPTIONAL

(A)=D36AX-E
(B)=D36AX-EP
(C)=D36AY-E
(D)=D36AY-EP
(E)=
(F)=

REF.	LEV.	PARTS NO.	DESCRIPTION	Q'TY						I	R
				(A)	(B)	(C)	(D)	(E)	(F)		
1	1	196630-10050	NUT M 8	2	2	2	2				
2	1	196630-10110	BOLT 6X20	4	4	4	4				
3	1	22213-060000	SPRING WASHER 6	6	6	6	6				
4	1	196640-12051-1	BRACKET	2	2	2	2				
5	1	196640-12061	LEVER	2	2	2	2				
6	1	196640-12080	PLATE	2	2	2	2				
7	1	196630-12101-1	MOLDING	1	1	1	1				
8	1	196640-12102-1	TOP COULING ASSY	1	1						
I	8A	1	196640-12300-1	TOP COULING ASSY (79	1	1					W 1
(A=D/#03841) (B=D/#03636)											
9	1	196640-12200-1	TOP COULING (GRAT:79			1	1				
11	2	196640-12031	SEAL	1	1	1	1				
12	2	196640-12340	LABEL	1	1						
13	2	196630-12381	LABEL			1	1				
14	2	196640-12850	LABEL	3	3	3	3				
I	14A	2	196640-12950	LABEL	3	3					W 1
(A=D/#03841) (B=D/#03636)											
15	2	196630-12880	LABEL	1	1	1	1				
16	2	196630-12890	LABEL	1	1	1	1				
17	2	196630-12900	LABEL	1	1	1	1				
18	2	196630-12390	LABEL			1	1				
19	1	120270-12180	WASHER	4	4	4	4				
20	1	196640-12410-1	HANDLE	2	2	2	2				
21	1	196640-12420	BUSH	2	2	2	2				
22	1	196640-12431	WASHER	2	2	2	2				
23	1	196630-10370	WASHER 8	2	2	2	2				
24	1	23418-150000	PACKING 15	4	4	4	4				
25	1	24311-000125	O-RING 1A P-12.5	2	2	2	2				
26	1	22213-080000	SPRING WASHER 8	2	2	2	2				
27	1	196630-10100	BOLT 6X16	6	6	6	6				
28	1	796630-55700	TANK ASSY, FUEL OIL	1	1						
29	1	796630-55710	TANK ASSY, FUEL OIL			1	1				
30	3	183251-07190	LABEL, DIESEL FUEL	1	1	1	1				
33	3	196630-11060	LABEL YANMAR	2	2	2	2				
34	2	196630-11110	CAP	1	1						
35	2	196630-11100	CAP			1	1				
36	2	196630-11161	GAUGE, LEVEL	1	1						
37	2	196630-11170	GAUGE			1	1				
38	2	196630-11190	WASHER 5	4	4	4	4				
39	2	196630-11210	GASKET	1	1	1	1				
40	2	26553-050162	SCREW M 5X 16	4	4	4	4				
40A	2	196630-10620	SCREW M 5X 12			1	1				
41	2	196630-11250	BODY, FUEL GAUGE			1	1				
42	2	196630-11260	HOSE, FUEL TANK			1	1				
43	2	196630-11270	CLAMP, PIPE			1	1				
44	2	124060-77680	CLAMP 10			1	1				
45	1	196630-11301	PIPE(FO)	1	1						
46	1	196630-11550	PIPE ASSY, FUEL OIL			1	1				
47	2	196630-11311	JOINT	1	1						
48	2	196630-11560	JOINT			1	1				
49	2	196630-11320	COLLER	2	2	2	2				

Fig. 14 トップカウリング&燃料タンク
TOP COWLING & FUEL TANK

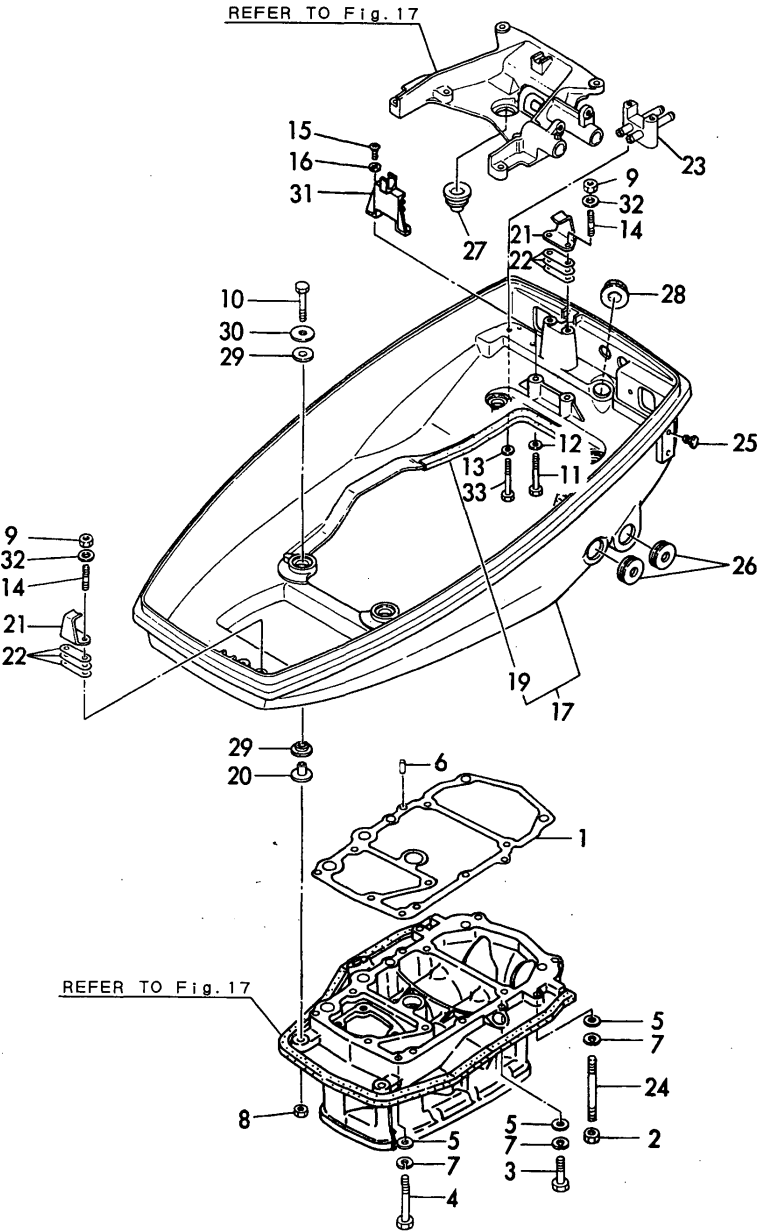
Remarks
(1)OPTIONAL

REF.	LEV.	PARTS NO.	DESCRIPTION	QTY						I	R
				(A)	(B)	(C)	(D)	(E)	(F)		
50	2	196630-11330	CLIP 15	4	4	4	4				
51	2	196630-11350	HOSE 950	2	2	2	2				
52	2	196630-11360	HOSE 2000	1	1	1	1				
53	2	196630-11400	VALVE	1	1	1	1				
59	1	196630-11390	CLAMP	2	2	4	4				
60	1	196630-11490	LABEL	1	1						
61	1	196630-11500	PIPE ASSY, FUEL OIL			1	1				
62	2	196630-11311	JOINT			1	1				
63	2	196630-11330	CLIP 15			2	2				
64	2	196630-11510	PIPE, FUEL OIL			2	2				
65	1	196640-01910	LABEL	1	1	1	1				W
		(A=*1996.03)	(B=*1996.03)	(C=*1996.03)	(D=*1996.03)						
66	1	196630-12970	LABEL	1	1	1	1				W
		(A=*1996.03)	(B=*1996.03)	(C=*1996.03)	(D=*1996.03)						
67	1	196630-12980	LABEL	1	1	1	1				W
		(A=*1996.03)	(B=*1996.03)	(C=*1996.03)	(D=*1996.03)						

N:Old $\begin{smallmatrix} \text{Yes} \\ \text{No} \end{smallmatrix}$ New, Q:Old $\begin{smallmatrix} \text{No} \\ \text{Yes} \end{smallmatrix}$ New, R:Old $\begin{smallmatrix} \text{Yes} \\ \text{Yes} \end{smallmatrix}$ New, S:Old $\begin{smallmatrix} \text{No} \\ \text{No} \end{smallmatrix}$ New, W:Add, Z:Discontinued, F:Interchangeable by set, K:Q'ty Change
(C)Copy Rights YANMAR CO.,LTD.

Fig.16. BOTTOM COWLING & CONNECTING PART

Fig. 16 ボトムカウリング&接続部品
BOTTOM COWLING & CONNECTING PART

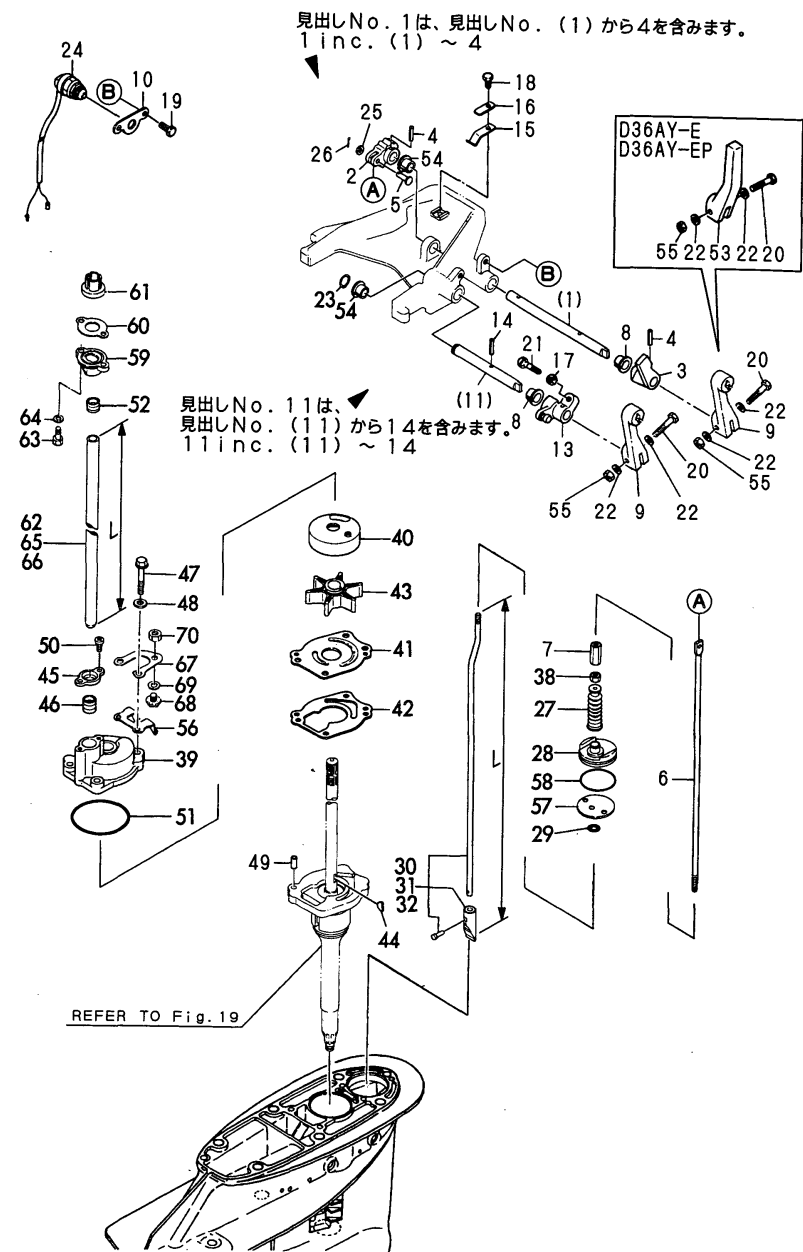


(A)=D36AX-E
(B)=D36AX-EP
(C)=D36AY-E
(D)=D36AY-EP
(E)=
(F)=

REF.	LEV.	PARTS NO.	DESCRIPTION	Q'TY						I	R
				(A)	(B)	(C)	(D)	(E)	(F)		
1	1	120380-01710	GASKET(LOWER)	1	1	1	1				
2	1	196630-10050	NUT M 8	2	2	2	2				
3	1	196630-10230	BOLT 8X40	2	2	2	2				
4	1	196630-10250	BOLT 8X55	8	8	8	8				
5	1	196630-10370	WASHER 8	12	12	12	12				
6	1	196630-10530	PARALLEL PIN 6X 11	2	2	2	2				
7	1	22213-080000	SPRING WASHER 8	12	12	12	12				
8	1	196630-10030	NUT 6	4	4	4	4				
9	1	196630-10030	NUT 6	4	4	4	4				
10	1	196630-10150	BOLT, M 6X 40	4	4	4	4				
11	1	196630-10160	BOLT, M 6X 50	1	1	1	1				
12	1	196630-10350	WASHER 6	4	4	4	4				
13	1	196630-10350	WASHER 6	2	2	2	2				
14	1	196630-10420	STUD	4	4	4	4				
15	1	196630-10620	SCREW M 5X 12	2	2	2	2				
16	1	196630-11190	WASHER 5	2	2	2	2				
17	1	196640-12500-1	COWLING ASSY(GRAY:78	1	1	1	1				
19	2	196640-12811	RUBBER, SEAL	1	1	1	1				
20	1	196640-12551	COLLAR	4	4	4	4				
21	1	196640-12611	HOOK	2	2	2	2				
22	1	196640-12630	SHIM	8	8	8	8				
23	1	196630-12652-1	CONNECTOR (GRAY:78	1	1	1	1				
24	1	196640-10340	STUD M 8X 80	2	2	2	2				
25	1	196630-12720	PLUG, BLIND	2	2	2	2				
26	1	196630-12730	GROMMET	2	2	2	2				
27	1	196630-12741	GROMMET	1	1	1	1				
28	1	196630-12750	COVER, BLIND	1	1	1	1				
29	1	196640-12820	GROMMET	8	8	8	8				
30	1	196640-12830	WASHER	8	8	8	8				
31	1	120270-77960	BRACKET	1	1	1	1				
32	1	22213-060000	SPRING WASHER 6	4	4	4	4				
33	1	196630-10080	BOLT M 6X 65	1	1	1	1				

Fig.18. SHIFT DEVICE & COOLING WATER PUMP

Fig. 18 シフト装置 & 冷却水ポンプ
SHIFT DEVICE & COOLING WATER PUMP

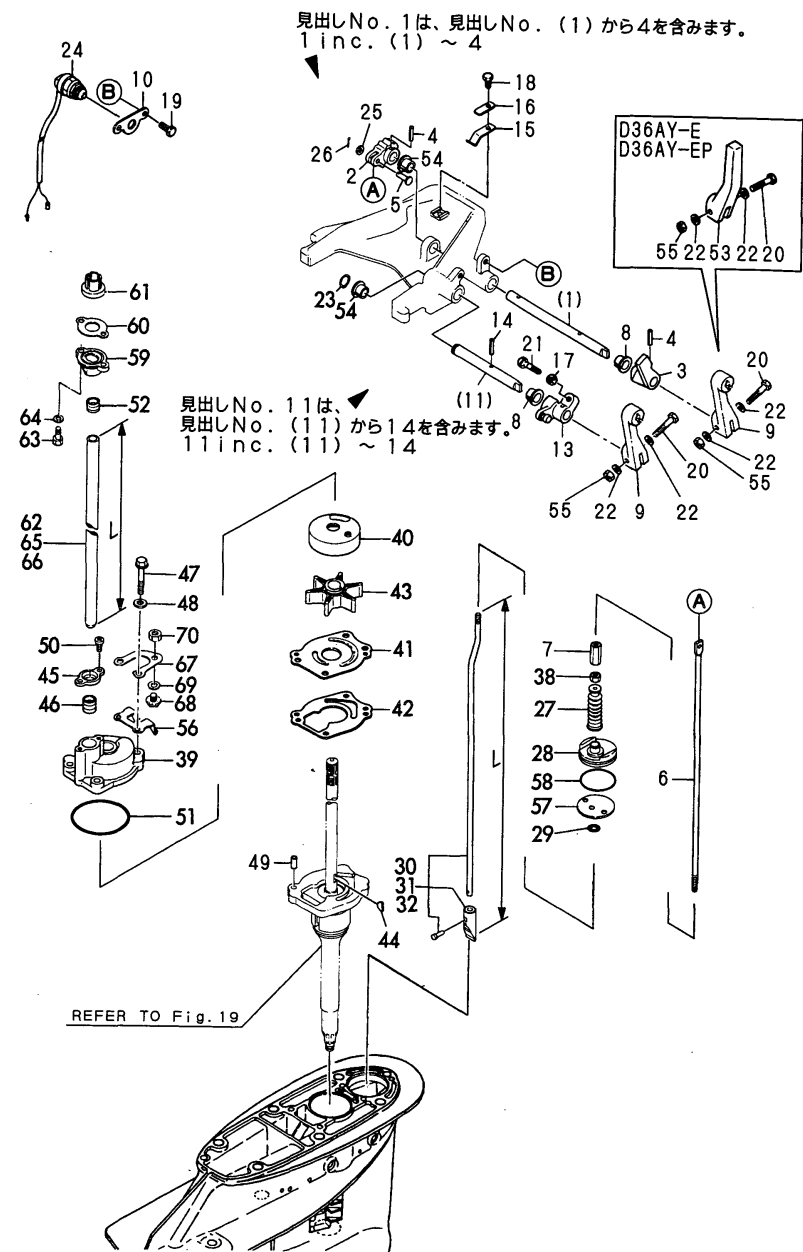


(A)=D36AX-E
(B)=D36AX-EP
(C)=D36AY-E
(D)=D36AY-EP
(E)=
(F)=

REF.	LEV.	PARTS NO.	DESCRIPTION	Q'TY						I	R
				(A)	(B)	(C)	(D)	(E)	(F)		
1	1	796640-06130-1	LEVER ASSY, SAFTY (A=EXXX) (B=EXXX) (C=EXXX) (D=EXXX)	1	1	1	1				W
2	2	196630-06060	DETENT	1	1	1	1				
3	2	196630-06110-1	LEVER (GRAY:78)	1	1	1	1				
4	2	196630-10650	PIN 4X 20	2	2	2	2				
5	1	196630-06070	PIN	1	1	1	1				
6	1	196630-06080	ROD	1	1	1	1				
7	1	196630-06090	CONECTOR	1	1	1	1				
8	1	196630-06140	BUSH 12	2	2	2	2				
9	1	196630-34040-1	LEVER (GRAY:78)	2	2						
10	1	196630-06190	BLACKET	1	1	1	1				
11	1	796640-06310-1	LEVER ASSY, REVERSE (A=EXXX) (B=EXXX) (C=EXXX) (D=EXXX)	1	1	1	1				W
13	2	196630-06251-1	LEVER ASSY (GRAY:78)	1	1	1	1				
14	2	196630-10650	PIN 4X 20	1	1	1	1				W
15	1	196630-06330	SPRING (A=EXXX) (B=EXXX) (C=EXXX) (D=EXXX)	1	1	1	1				
16	1	196630-06340	SPRING	1	1	1	1				
17	1	196630-10030	NUT 6	1	1	1	1				
18	1	196630-10630	SCREW	1	1	1	1				
19	1	196630-10100	BOLT 6X16	2	2	2	2				
20	1	196630-10130	BOLT, M 6X 30	2	2	1	1				
21	1	196630-10180	BOLT 6X35	1	1	1	1				
21-1	1	196630-10130	BOLT, M 6X 30 (A=D/#03654) (B=D/#03685) (C=*1994.05) (D=*1994.05)	1	1	1	1				R
22	1	196630-10350	WASHER 6	4	4	2	2				
23	1	196630-10710	CIRCLIP 12	1	1	1	1				
24	1	120270-77101	SWITCH	1	1	1	1				
25	1	22133-050000	WASHER 5	1	1	1	1				
26	1	22413-200100	COTTER PIN 2.0X10	1	1	1	1				
27	1	196630-06450	BOOT	1	1	1	1				
28	1	196640-06460	GUIDE	1	1	1	1				
29	1	196630-06470	O-RING 6	1	1	1	1				
30	1	196640-06552	SHIFT CAM (L)	1	1	1	1				
31	1	196641-06551	SHIFT CAM (UL)	1	1	1	1				
32	1	196642-06551	SHIFT CAM (UL)	1	1	1	1				
38	1	26753-060002	NUT M 6	1	1	1	1				
39	1	196640-08010	HOUSING	1	1	1	1				
40	1	196640-08020	INSERT	1	1	1	1				
41	1	196640-08031	PLATE	1	1	1	1				
42	1	196640-08040	GASKET	1	1	1	1				
43	1	196640-08051	IMPELLER	1	1	1	1				
44	1	196640-08080	KEY	1	1	1	1				
45	1	196640-08110	GUIDE	1	1	1	1				
46	1	196640-08131	RUBBER, SEAL	1	1	1	1				
47	1	196630-10150	BOLT, M 6X 40	4	4	4	4				
48	1	196630-10350	WASHER 6	4	4	4	4				
49	1	196630-10530	PARALLEL PIN 6X 11	2	2	2	2				
50	1	196630-10620	SCREW M 5X 12	2	2	2	2				
51	1	24321-000650	O-RING 1A G-65.0	1	1	1	1				
52	1	196640-08131	RUBBER, SEAL	1	1	1	1				

Fig.18. SHIFT DEVICE & COOLING WATER PUMP

Fig. 18 シフト装置 & 冷却水ポンプ
SHIFT DEVICE & COOLING WATER PUMP

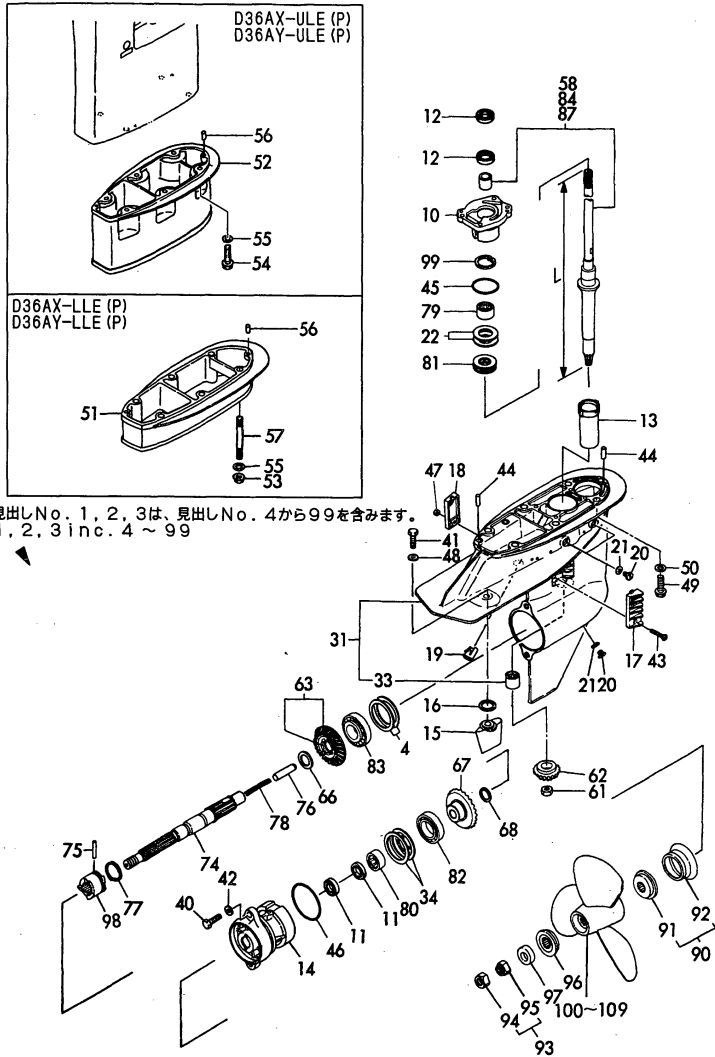


(A)=D36AX-E
(B)=D36AX-EP
(C)=D36AY-E
(D)=D36AY-EP
(E)=
(F)=

REF.	LEV.	PARTS NO.	DESCRIPTION	Q'TY						I	R
				(A)	(B)	(C)	(D)	(E)	(F)		
53	1	196630-06170-1	HANDLE (GRAY:78				1	1			
54	1	196630-06150	BUSH		2	2	2	2			
55	1	196630-10030	NUT 6		2	2	1	1			
56	1	196640-06470	HOLDER,SHIFT GUIDE		1	1	1	1			
57	1	196640-06480	PLATE,SHIFT GUIDE		1	1	1	1			
58	1	24321-000450	O-RING 1A G-45.0		1	1	1	1			
59	1	196640-08120	CASE,SEAL RUBBER		1	1	1	1			
60	1	196640-08150	PACKING,CS.SEAL RBBR		1	1	1	1			
61	1	196640-08160	ANODE,CS.SEAL RUBBER		1	1	1	1			
62	1	196640-08550	PIPE (L)		1	1	1	1			
63	1	196630-10110	BOLT 6X20		2	2	2	2			
64	1	196630-10350	WASHER 6		2	2	2	2			
65	1	196641-08550	TUBE(CW LL		1	1	1	1			
66	1	196642-08550	PIPE (CW UL		1	1	1	1			
67	1	196640-08180	PLATE,ANODE		1	1	1	1			
68	1	120270-09302	ZINC, PROTECT		1	1	1	1			
69	1	120270-09310	GASKET		1	1	1	1			
70	1	196630-10030	NUT 6		1	1	1	1			

Fig.19. LOWER GEAR HOUSING & PROPELLER

Fig. 19 ロウギヤケース&プロペラ
LOWER GEAR HOUSING & PROPELLER



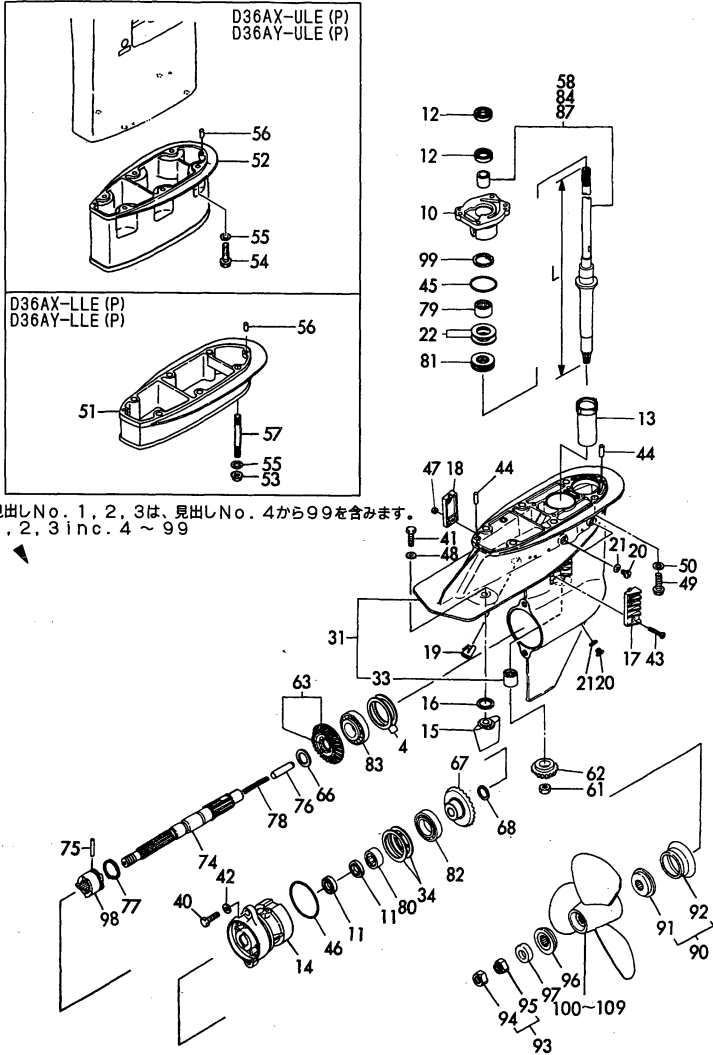
Remarks
(1)INC. REF.22,51,53,55,56,57,84
& FIG.18 REF.31,65.
OPTIONAL
(2)INC. REF.22,52,54,55,56,87
& FIG.18 REF.32,66.
OPTIONAL

(A)=D36AX-E
(B)=D36AX-EP
(C)=D36AY-E
(D)=D36AY-EP
(E)=
(F)=

REF.	LEV.	PARTS NO.	DESCRIPTION	Q'TY						I	R
				(A)	(B)	(C)	(D)	(E)	(F)		
1	1	796640-02600-1	HOUSING,LOWER(L) (78	1	1	1	1				
2	1	796641-02600-1	HOUSING,LOWER(LL)(78	1	1	1	1				
3	1	796642-02600-1	HOUSING,LOWER(UL)(78	1	1	1	1				
4	2	196311-02310	SHIM SET	1	1	1	1				
10	2	196640-02552-1	CASE,OIL SEAL (78	1	1	1	1				
11	2	196630-02571	OIL SEAL	2	2	2	2				
12	2	196640-02570	OIL SEAL SC25378	2	2	2	2				
13	2	196640-02610	OIL GUIDE	1	1	1	1				
14	2	196640-02660-1	HOUSING	1	1	1	1				
15	2	196640-02680	TUB, TRIM	1	1	1	1				
16	2	196640-02690	GASKET (TUB, TRIM	1	1	1	1				
17	2	196640-02710	COVER R	1	1	1	1				
18	2	196640-02720	COVER L	1	1	1	1				
19	2	196640-02760	FILTER,COOL.WTR.SUB-	1	1	1	1				
20	2	196630-02771	PLUG 8X8	3	3	3	3				
21	2	196630-02781	GASKET 8	3	3	3	3				
22	2	196630-02801	SHIM SET	1	1	1	1				
31	2	196640-02800-1	HOUSING,LOWER (78	1	1	1	1				
33	3	196640-04470	BEARING	1	1	1	1				
34	2	196640-02900	SHIM SET	1	1	1	1				
40	2	196630-10330	BOLT 10X35	2	2	2	2				
41	2	196630-10330	BOLT 10X35	1	1	1	1				
42	2	196630-10390	WASHER 10	2	2	2	2				
43	2	196630-10451	SCREW M5X30	1	1	1	1				
44	2	196630-10530	PARALLEL PIN 6X 11	2	2	2	2				
45	2	24321-000450	O-RING 1A G-45.0	1	1	1	1				
46	2	24321-000750	O-RING 1A G-75.0	1	1	1	1				
47	2	26343-050002	U-NUT M 5	1	1	1	1				
48	2	43400-500790	SEAL WASHER 10(SUS)	1	1	1	1				
I 48-1	2	22193-100003	SEAL WASHER 10(SUS)	1	1	1	1				R
(A=D/#03580) (B=D/#03582) (C=*1993.08) (D=*1993.08)											
49	2	196630-10330	BOLT 10X35	6	6	6	6				
50	2	196630-10390	WASHER 10	6	6	6	6				
51	2	196641-02530-1	EXTENSION(LL(GRAY:78	1	1	1	1				
52	2	196642-02530-1	EXTENSION(UL(GRAY:78	1	1	1	1				
53	2	196640-10070	NUT, M10	6	6	6	6				
54	2	196630-10330	BOLT 10X35	6	6	6	6				
55	2	196630-10390	WASHER 10	6	6	6	6				
56	2	196630-10530	PARALLEL PIN 6X 11	2	2	2	2				
57	2	196640-10710	STUD M10X 90	6	6	6	6				
58	2	196640-04051	SHAFT, DRIVE L=820	1	1	1	1				
61	2	196640-04081	NUT	1	1	1	1				
62	2	196640-04171	PINION	1	1	1	1				
63	2	196640-04201	F.GEAR SET	1	1	1	1				
66	2	196640-04240	COLLOR	1	1	1	1				
67	2	196640-04251	R-GEAR	1	1	1	1				
68	2	196640-04260	COLLOR SET	1	1	1	1				
74	2	196640-04340	SHAFT, PROPELLER	1	1	1	1				
75	2	196640-04370	PIN	1	1	1	1				
76	2	196640-04390	PLUNGER	1	1	1	1				
77	2	196640-04410	RING	1	1	1	1				

Fig.19. LOWER GEAR HOUSING & PROPELLER

Fig. 19 ロウギヤケース&プロペラ
LOWER GEAR HOUSING & PROPELLER



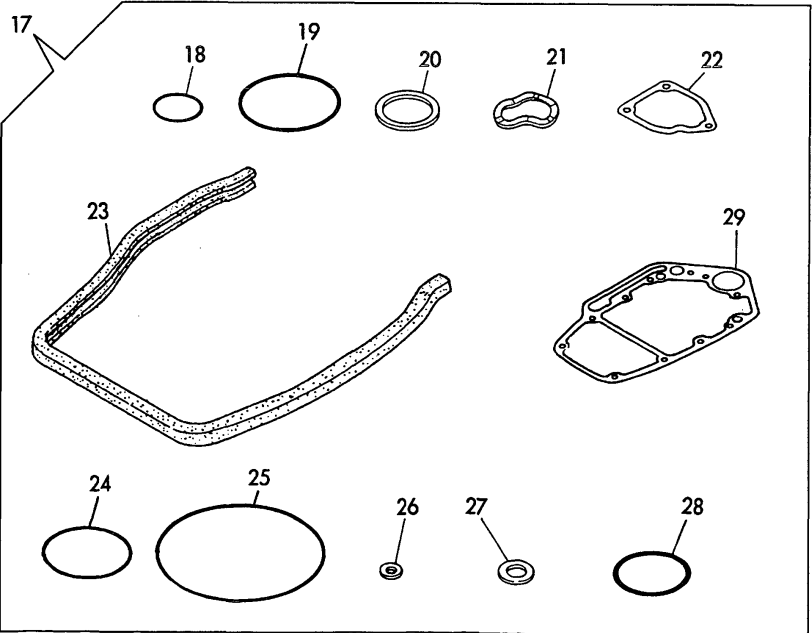
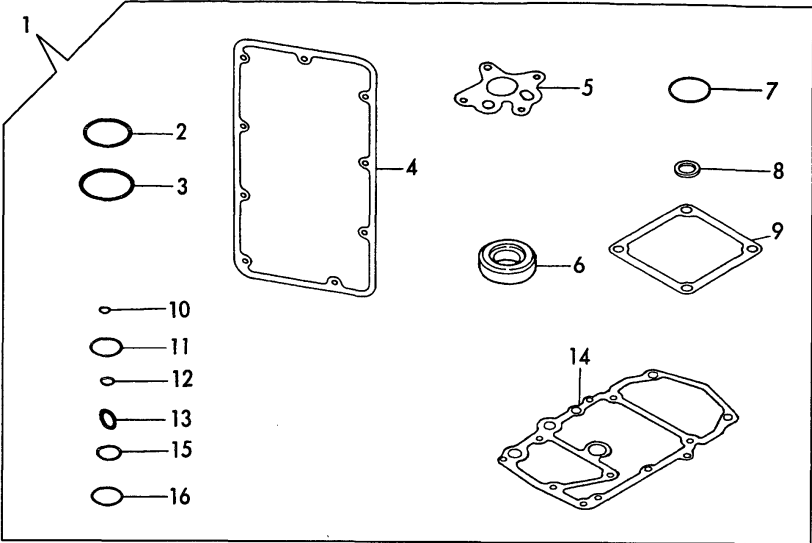
Remarks
(1)INC. REF.22,51,53,55,56,57,84
& FIG.18 REF.31,65.
OPTIONAL
(2)INC. REF.22,52,54,55,56,87
& FIG.18 REF.32,66.
OPTIONAL

(A)=D36AX-E
(B)=D36AX-EP
(C)=D36AY-E
(D)=D36AY-EP
(E)=
(F)=

REF.	LEV.	PARTS NO.	DESCRIPTION	Q'TY						I	R
				(A)	(B)	(C)	(D)	(E)	(F)		
78	2	196640-04430	SPRING	1	1	1	1				
79	2	196640-04460	BEARING	1	1	1	1				
80	2	196640-04480	BEARING	1	1	1	1				
81	2	196630-04931	BEARING	1	1	1	1				
82	2	24101-060084	BALL BEARING	1	1	1	1				
83	2	24142-302070	BEARING	1	1	1	1				
84	2	196641-04051	SHAFT, DRIVE L=883	1	1	1	1				
87	2	196642-04051	SHAFT, DRIVE L=945	1	1	1	1				
90	2	196640-09810	SPACER COMP.,FRONT	1	1	1	1				
91	3	196640-09820	SPACER,FRONT	1	1	1	1				
92	3	196640-09940		1	1	1	1				
93	2	196640-09861	NUT PROPELLER CMP	1	1	1	1				
94	3	196640-09870	LOCK NUT	1	1	1	1				
95	3	196640-09880	LOCK NUT	1	1	1	1				
96	2	196640-09922	SPACER	1	1	1	1				
97	2	196640-09950	SPACER	1	1	1	1				
98	2	196640-04312	CLUTCH DOG	1	1	1	1				
99	2	22252-000370	CIRCLIP 37	1	1	1	1				
100	1	196640-09110	PROPELLER 11.5X 9	1	1	1	1				
101	1	196640-09120	PROPELLER 11.5X10	1	1	1	1				
102	1	196640-09130	PROPELLER 11.5X11	1	1	1	1				
103	1	196640-09140	PROPELLER 11.5X12	1	1	1	1				
104	1	196640-09150	PROPELLER 11.5X 13	1	1	1	1				
105	1	196640-09160	PROPELLER 11.5X14	1	1	1	1				
106	1	196640-09170	PROPELLER 11.5X15	1	1	1	1				
107	1	196640-09200	PROPELLER 11.5X10.5	1	1	1	1				
108	1	196640-09210	PROPELLER 11.5X11.5	1	1	1	1				
109	1	196640-09220	PROPELLER 11.5X12.5	1	1	1	1				
110	1	796641-99611	EXTENSION KIT (LL)	1	1	1	1				1
111	1	796642-99612	EXTENSION KIT (UL)	1	1	1	1				2

Fig.32. GASKET SET(OPTIONAL)

Fig.32 パッキンセット (オプション)
GASKET SET (OPTIONAL)



OCR10-G42501 32. GASKET SET(OPTIONAL)

REF.	LEV.	PARTS NO.	DESCRIPTION	Q'TY						I	R
				(A)	(B)	(C)	(D)	(E)	(F)		
1	1	720380-92700	GASKET SET	1	1	1	1				
2	2	24321-000350	O-RING 1A G-35.0	1	1	1	1				
3	2	24321-000500	O-RING 1A G-50.0	1	1	1	1				Z
(A=D/#03537) (B=D/#03548) (C=*1993.07) (D=*1993.07)											
4	2	120380-11332	GASKET, BONNET	1	1	1	1				
5	2	120380-32031	GASKET, LO.PUMP	1	1	1	1				
6	2	120270-11841	GASKET	3	3	3	3				
7	2	120270-53350	O-RING (27.1/23.3)	3	3	3	3				
8	2	43400-500450	SEAL WASHER 12S	4	4	4	4				
8-1	2	22190-120002	SEAL WASHER 12	4	4	4	4				R
(A=D/#03580) (B=D/#03582) (C=*1993.08) (D=*1993.08)											
9	2	120270-61020	GASKET	1	1	1	1				
10	2	24311-000050	O-RING 1A P-5.0	1	1	1	1				
11	2	24341-000200	O-RING 1A S-20.0	1	1	1	1				
12	2	24311-000070	O-RING 1A P-7.0	1	1	1	1				
13	2	24311-000140	O-RING 1A P-14.0	2	2	2	2				
14	2	120380-01710	GASKET(LOWER)	1	1	1	1				
15	2	24311-000180	O-RING 1A P-18.0	1	1	1	1				
16	2	120270-53360	O-RING (24.8/21.0)	3	3	3	3				
17	1	796640-92710	GASKET SET	1	1	1	1				
18	2	24311-000224	O-RING 1A P-22.4	2	2	2	2				
19	2	24321-000450	O-RING 1A G-45.0	1	1	1	1				
20	2	196630-05780	WASHER	2	2	2	2				
21	2	196630-05790	WASHER 29	1	1	1	1				
22	2	196640-02360	GASKET	1	1	1	1				
22-1	2	196640-02361	GASKET(EXHAUST TUBE	1	1	1	1				N
(A=D/#04370) (B=D/#04372) (C=D/#04147) (D=D/#04054)											
23	2	196640-02151	RUBBER, SEAL	1	1	1	1				
24	2	24321-000400	O-RING 1A G-40.0	4	4	4	4				
25	2	24321-000750	O-RING 1A G-75.0	1	1	1	1				
26	2	196630-02781	GASKET 8	3	3	3	3				
27	2	196630-07080	RUBBER, SEAL	1	1	1	1				
28	2	24321-000450	O-RING 1A G-45.0	1	1	1	1				
29	2	196640-02200	PACKING,ENGINE MOUNT	1	1	1	1				